

\$480,000 - 2053 Graydon Hill Crescent, Edmonton

MLS® #E4458341

\$480,000

3 Bedroom, 2.50 Bathroom, 1,641 sqft

Single Family on 0.00 Acres

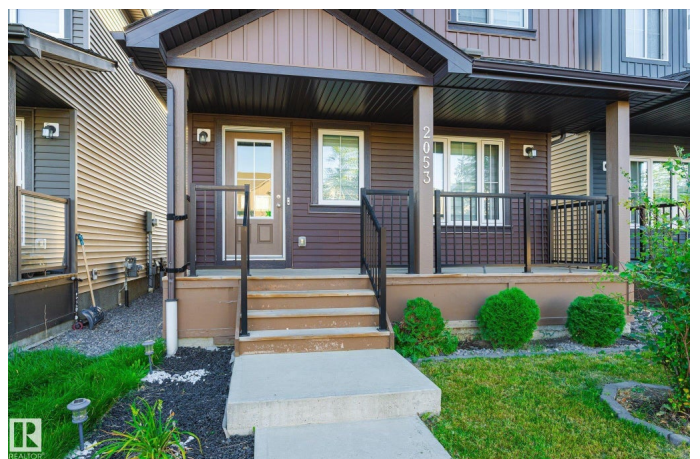
Graydon Hill, Edmonton, AB

Ready for your family to move in and enjoy! Located in the quiet community of Graydon Hill, this 3 bedroom 2.5 bathroom two storey single family home is packed with value. Built in 2019 and complete with central a/c, window coverings, composite deck, and double attached garage, you'll appreciate over 1600 sqr ft of living space. The main floor is open concept and features a generous sized kitchen with massive island - finished with quartz countertops and stainless steel appliances. The half bath, back mudroom, living and dining space complete the first floor's very functional and family friendly layout. Upstairs be impressed by the LAUNDRY ROOM aside a main bathroom and 3 bedrooms including the primary with walk in closet and ensuite. Quartz counters carry throughout all bathrooms in this home. With a landscaped yard, front veranda, and charming curb appeal - this home is functional and affordable for buyers of varying needs. Quick possession available!

Built in 2019

Essential Information

MLS® #	E4458341
Price	\$480,000
Bedrooms	3
Bathrooms	2.50



Full Baths	2
Half Baths	1
Square Footage	1,641
Acres	0.00
Year Built	2019
Type	Single Family
Sub-Type	Detached Single Family
Style	2 Storey
Status	Active

Community Information

Address	2053 Graydon Hill Crescent
Area	Edmonton
Subdivision	Graydon Hill
City	Edmonton
County	ALBERTA
Province	AB
Postal Code	T6W 4C5

Amenities

Amenities	On Street Parking, Air Conditioner, Deck, Front Porch, No Smoking Home
Parking Spaces	2
Parking	Double Garage Detached

Interior

Interior Features	ensuite bathroom
Appliances	Air Conditioning-Central, Dishwasher-Built-In, Dryer, Hood Fan, Oven-Microwave, Refrigerator, Stove-Electric, Washer, Window Coverings
Heating	Forced Air-1, Natural Gas
Stories	2
Has Basement	Yes
Basement	Full, Unfinished

Exterior

Exterior	Wood, Vinyl
Exterior Features	Airport Nearby, Fenced, Flat Site, Landscaped, Playground Nearby, Public Transportation, Schools, Shopping Nearby

Roof	Asphalt Shingles
Construction	Wood, Vinyl
Foundation	Concrete Perimeter

Additional Information

Date Listed	September 18th, 2025
Zoning	Zone 55

DATA IS DEEMED RELIABLE BUT IS NOT GUARANTEED ACCURATE BY THE REALTORS® ASSOCIATION OF EDMONTON. COPYRIGHT 2025 BY THE REALTORS® ASSOCIATION OF EDMONTON. ALL RIGHTS RESERVED.Trademarks are owned or controlled by the Canadian Real Estate Association (CREA) and identify real estate professionals who are members of CREA (REALTOR®, REALTORS®) and/or the quality of services they provide (MLS®, Multiple Listing Service®)

Listing information last updated on September 18th, 2025 at 3:47pm MDT