

\$737,000 - 7235 May Road, Edmonton

MLS® #E4455063

\$737,000

4 Bedroom, 3.50 Bathroom, 2,065 sqft

Single Family on 0.00 Acres

Magrath Heights, Edmonton, AB

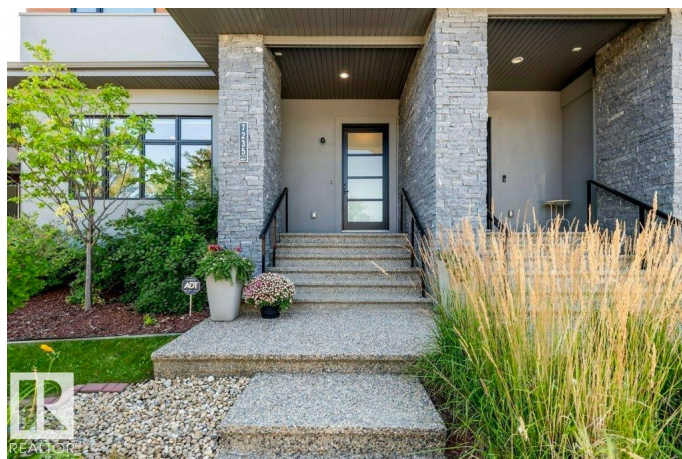
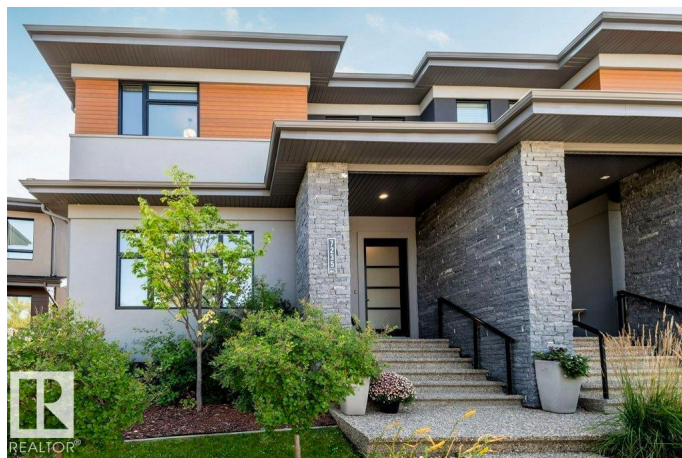
Welcome to prestigious Larch Park in Magrath Heights, where luxury meets natural beauty. Nestled among ravine trails, serene parks & tree-lined streets, this sought-after community offers walkability to top-rated schools & effortless access to amenities. This 3+1 Bed 2000+sqft residence showcases timeless design with 10' ceilings, hand scraped hardwood floors, main floor den, a stunning gourmet kitchen crafted for both entertaining and everyday elegance. The Primary Suite comes with an Ensuite w Steam Shower and its own private Balcony, perfect for your morning coffee. There are 2 more Bedrooms, a Full Bath and convenient Upstairs Laundry. The fully finished basement elevates your lifestyle with a spacious Family Room, Wet Bar, Gym, full bath, and Guest Bedroom. Outdoors, enjoy a sun-soaked south-facing yard with an expansive deck, beautiful landscaping and Double Oversized Garage. With its blend of sophistication, convenience, and tranquility, this home captures the very best of Magrath Heights living.

Built in 2016

Essential Information

MLS® # E4455063

Price \$737,000



Bedrooms	4
Bathrooms	3.50
Full Baths	3
Half Baths	1
Square Footage	2,065
Acres	0.00
Year Built	2016
Type	Single Family
Sub-Type	Half Duplex
Style	2 Storey
Status	Active

Community Information

Address	7235 May Road
Area	Edmonton
Subdivision	Magrath Heights
City	Edmonton
County	ALBERTA
Province	AB
Postal Code	T6R 0V8

Amenities

Amenities	On Street Parking, Bar, Ceiling 10 ft., Closet Organizers, Deck, No Animal Home, No Smoking Home
Parking	Double Garage Detached

Interior

Interior Features	ensuite bathroom
Appliances	Dishwasher-Built-In, Dryer, Garage Control, Garage Opener, Hood Fan, Oven-Microwave, Refrigerator, Stove-Electric, Washer, Window Coverings
Heating	Forced Air-1, Natural Gas
Stories	3
Has Basement	Yes
Basement	Full, Finished

Exterior

Exterior	Wood, Stone, Stucco
Exterior Features	Back Lane, Fenced, Landscaped, Park/Reserve, Playground Nearby,

	Schools, Shopping Nearby
Roof	Asphalt Shingles
Construction	Wood, Stone, Stucco
Foundation	Concrete Perimeter

School Information

Elementary	Nellie Carlson
High	Lillian Osborne

Additional Information

Date Listed	August 28th, 2025
Days on Market	1
Zoning	Zone 14
HOA Fees	210
HOA Fees Freq.	Annually

DATA IS DEEMED RELIABLE BUT IS NOT GUARANTEED ACCURATE BY THE REALTORS® ASSOCIATION OF EDMONTON. COPYRIGHT 2025 BY THE REALTORS® ASSOCIATION OF EDMONTON. ALL RIGHTS RESERVED. Trademarks are owned or controlled by the Canadian Real Estate Association (CREA) and identify real estate professionals who are members of CREA (REALTOR®, REALTORS®) and/or the quality of services they provide (MLS®, Multiple Listing Service®)

Listing information last updated on August 29th, 2025 at 8:17am MDT