

\$394,900 - 7013 Cardinal Way, Edmonton

MLS® #E4453686

\$394,900

3 Bedroom, 2.50 Bathroom, 1,416 sqft
Single Family on 0.00 Acres

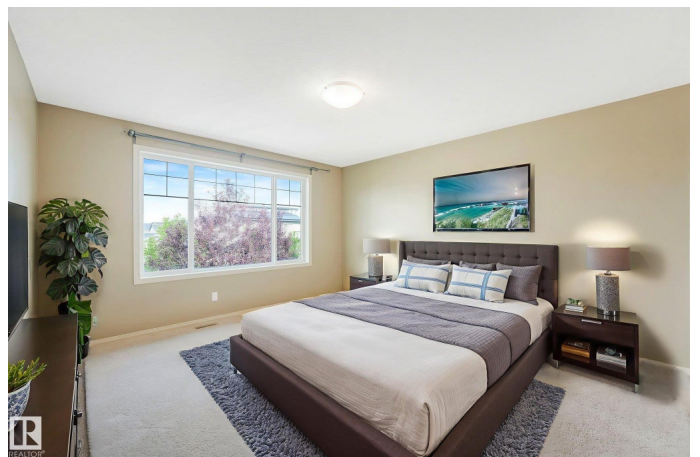
Chappelle Area, Edmonton, AB

NO CONDO FEES!! If youâ€™ve been looking for an Immaculate, Clean & Affordable Family Home, your search is over! Your New Home features 3 Bedrooms, 3 bathrooms including en-suite with Walk-in Closet (Plus rough-in for full bath in the basement). Enjoy an abundance of Natural Light which floods the Living/Dining/Kitchen Area from your South Facing back yard (fully fenced). A quick and easy commute to Nisku, Airport and The Henday. Donâ€™t miss out on Your New Homeâ€”a quick possession is available. Some photos have been virtually staged.

Built in 2012

Essential Information

| | |
|----------------|---------------|
| MLS® # | E4453686 |
| Price | \$394,900 |
| Bedrooms | 3 |
| Bathrooms | 2.50 |
| Full Baths | 2 |
| Half Baths | 1 |
| Square Footage | 1,416 |
| Acres | 0.00 |
| Year Built | 2012 |
| Type | Single Family |
| Sub-Type | Half Duplex |
| Style | 2 Storey |



Status Active

Community Information

Address 7013 Cardinal Way

Area Edmonton

Subdivision Chappelle Area

City Edmonton

County ALBERTA

Province AB

Postal Code T6W 1Z1

Amenities

Amenities Detectors Smoke, Front Porch, Hot Water Natural Gas, No Smoking Home

Parking Single Garage Attached

Interior

Interior Features ensuite bathroom

Appliances Dishwasher-Built-In, Dryer, Garage Control, Garage Opener, Microwave Hood Fan, Refrigerator, Stove-Electric, Washer, Window Coverings

Heating Forced Air-1, Natural Gas

Stories 2

Has Basement Yes

Basement Full, Unfinished

Exterior

Exterior Wood, Vinyl

Exterior Features Airport Nearby, Fenced, Golf Nearby, Landscaped, Playground Nearby, Public Transportation, Schools

Roof Asphalt Shingles

Construction Wood, Vinyl

Foundation Concrete Perimeter

Additional Information

Date Listed August 19th, 2025

Days on Market 18

Zoning Zone 55

HOA Fees 100

HOA Fees Freq. Annually

DATA IS DEEMED RELIABLE BUT IS NOT GUARANTEED ACCURATE BY THE REALTORS® ASSOCIATION OF EDMONTON. COPYRIGHT 2025 BY THE REALTORS® ASSOCIATION OF EDMONTON. ALL RIGHTS RESERVED. Trademarks are owned or controlled by the Canadian Real Estate Association (CREA) and identify real estate professionals who are members of CREA (REALTOR®, REALTORS®) and/or the quality of services they provide (MLS®, Multiple Listing Service®)

Listing information last updated on September 6th, 2025 at 4:17pm MDT