

\$1,185,000 - 10818 68 Avenue, Edmonton

MLS® #E4452214

\$1,185,000

7 Bedroom, 7.50 Bathroom, 2,261 sqft

Single Family on 0.00 Acres

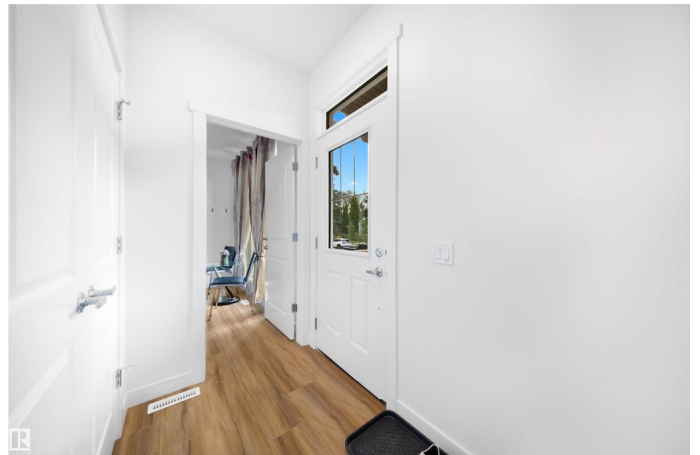
Allendale, Edmonton, AB

INVESTOR ALERT! 3 SELF CONTAINED LIVING SPACES – NEW BUILD IN ALLENDALE Exceptional investment opportunity in the desirable community of Allendale. This custom-built home features 2-Bdrm Legal Basement Suite 2-Bdrm Legal Garage Suite 4-Bdrm Primary Residence Bonus: Private Guest Suite with separate side entrance, 3-pc ensuite, laundry, fridge, and sink High-quality construction with upgraded finishings throughout. Includes two single-car garages plus additional parking pad. **PRIME LOCATION** – walking distance to Allendale Elementary, Strathcona High School, University of Alberta, and major hospitals. Live in one unit and rent the others! Add a **TURNKEY INCOME PROPERTY** to your portfolio. Don't miss this one-of-a-kind opportunity!

Built in 2025

Essential Information

MLS® #	E4452214
Price	\$1,185,000
Bedrooms	7
Bathrooms	7.50
Full Baths	7
Half Baths	1
Square Footage	2,261



Acres	0.00
Year Built	2025
Type	Single Family
Sub-Type	Detached Single Family
Style	2 Storey
Status	Active

Community Information

Address	10818 68 Avenue
Area	Edmonton
Subdivision	Allendale
City	Edmonton
County	ALBERTA
Province	AB
Postal Code	T6H 2B8

Amenities

Amenities	Detectors Smoke, Front Porch, Hot Water Tankless
Parking	Double Garage Detached

Interior

Interior Features	ensuite bathroom
Appliances	Dishwasher-Built-In, Dryer, Microwave Hood Fan, Refrigerator, Stacked Washer/Dryer, Stove-Electric, Washer, Dryer-Two, Refrigerators-Two, Stoves-Two, Washers-Two, Dishwasher-Two
Heating	Forced Air-1, Natural Gas
Stories	3
Has Suite	Yes
Has Basement	Yes
Basement	Full, Finished

Exterior

Exterior	Wood, Vinyl
Exterior Features	Flat Site, Not Landscaped, Paved Lane, Playground Nearby, Public Transportation, Schools, Shopping Nearby
Roof	Asphalt Shingles
Construction	Wood, Vinyl
Foundation	Concrete Perimeter

Additional Information

Date Listed August 9th, 2025

Days on Market 2

Zoning Zone 15

DATA IS DEEMED RELIABLE BUT IS NOT GUARANTEED ACCURATE BY THE REALTORS® ASSOCIATION OF EDMONTON. COPYRIGHT 2025 BY THE REALTORS® ASSOCIATION OF EDMONTON. ALL RIGHTS RESERVED. Trademarks are owned or controlled by the Canadian Real Estate Association (CREA) and identify real estate professionals who are members of CREA (REALTOR®, REALTORS®) and/or the quality of services they provide (MLS®, Multiple Listing Service®)

Listing information last updated on August 11th, 2025 at 4:02am MDT