

Courtesy Of Sharon M Josey Of RE/MAX River City

\$399,900 - 10951 118 Street, Edmonton

MLS® #E4448075

\$399,900

3 Bedroom, 2.00 Bathroom, 1,087 sqft
Single Family on 0.00 Acres

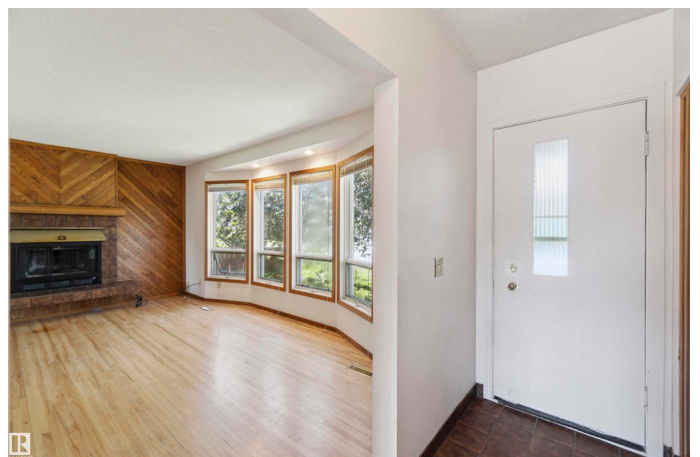
Queen Mary Park, Edmonton, AB

Queen Mary Park a warm & welcoming community ideal for families, offering convenient access to schools, shopping, public trans & steps away from Queen Mary Park. This charming Bung offers over 2,000 sq ft of lvg space, complete with a sgl det gar. The bright & inviting LR is highlighted by Lg windows that fill the space with natural light, complemented by a cozy WB FP. The thoughtfully designed kitch features a peninsula island for added functionality & opens to a spacious dining area with patio drs that lead to a lg deck. Down the hall, youâ€™™ll find 2 generously sized bdrms & a well appointed 4pc bath. The fully dev bsmt enhances the homeâ€™™s versatility, offering a 3rd bdrm, a 2nd 4pc bath, & a spacious Bonus Rm ideal for a FR or entertainment Ctr. Step outside to Grampaâ€™™s lovingly landscaped & fenced backyard, featuring mature trees & shrubs including an apple tree, raspberries, and gooseberries creating a peaceful retreat. upgrades include Shingles (2018) Furn & HWT (2024), New Lam Fl in the bsmt.

Built in 1951

Essential Information

MLS® #	E4448075
Price	\$399,900



Bedrooms	3
Bathrooms	2.00
Full Baths	2
Square Footage	1,087
Acres	0.00
Year Built	1951
Type	Single Family
Sub-Type	Detached Single Family
Style	Bungalow
Status	Active

Community Information

Address	10951 118 Street
Area	Edmonton
Subdivision	Queen Mary Park
City	Edmonton
County	ALBERTA
Province	AB
Postal Code	T5H 3P1

Amenities

Amenities	On Street Parking, Deck
Parking	Single Garage Detached

Interior

Appliances	Dryer, Freezer, Garage Opener, Stove-Electric, Window Coverings
Heating	Forced Air-1, Natural Gas
Fireplace	Yes
Fireplaces	Mantel, Tile Surround
Stories	2
Has Basement	Yes
Basement	Full, Finished

Exterior

Exterior	Wood
Exterior Features	Back Lane, Fenced, Fruit Trees/Shrubs, Playground Nearby, Public Transportation, Schools, Shopping Nearby
Roof	Asphalt Shingles
Construction	Wood

Foundation Block

Additional Information

Date Listed July 16th, 2025

Days on Market 35

Zoning Zone 08

DATA IS DEEMED RELIABLE BUT IS NOT GUARANTEED ACCURATE BY THE REALTORS® ASSOCIATION OF EDMONTON. COPYRIGHT 2025 BY THE REALTORS® ASSOCIATION OF EDMONTON. ALL RIGHTS RESERVED. Trademarks are owned or controlled by the Canadian Real Estate Association (CREA) and identify real estate professionals who are members of CREA (REALTOR®, REALTORS®) and/or the quality of services they provide (MLS®, Multiple Listing Service®)

Listing information last updated on August 20th, 2025 at 5:02pm MDT