

Courtesy Of Carolyn N Knispel Of RE/MAX River City

\$549,900 - 9228 92 Street, Edmonton

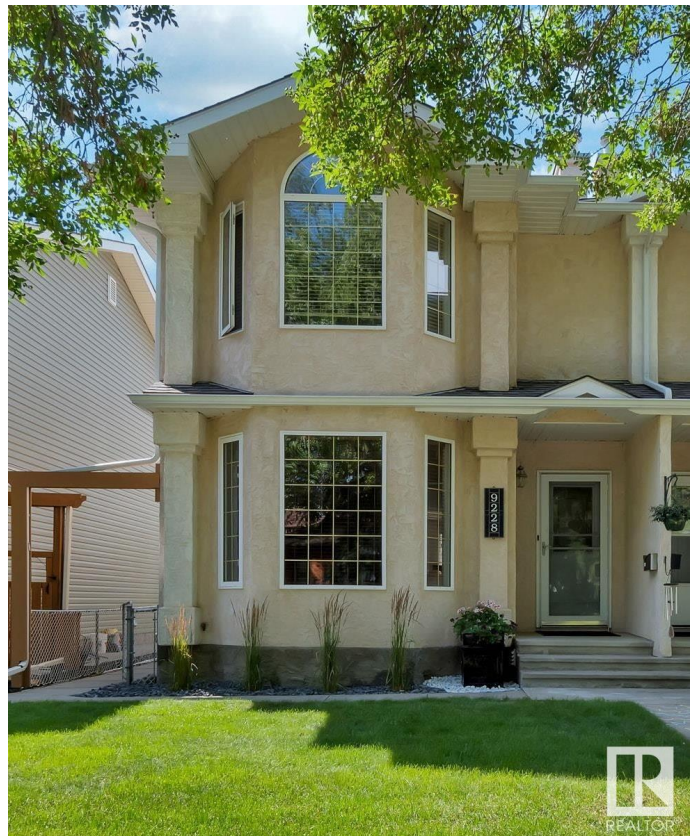
MLS® #E4447230

\$549,900

4 Bedroom, 3.00 Bathroom, 1,668 sqft
Single Family on 0.00 Acres

Bonnie Doon, Edmonton, AB

LOCATION!! Custom & 'well built 1650+ sqft duplex! Superb curb appeal, well landscaped in desirable Bonnie Doon! Immediately inviting to a good sized entrance which lead into large living room great for conversation and enjoys an oversized bay window. Fantastic floorplan for professional couples or families as easily accomodate large gatherings and bright w/ many oversized windows throughout. Beautiful main floor hardwood floors lead to the huge chef's island kitchen, upgraded appliances, plenty of cabinets/countertops and is perfect place to entertain. Off kitchen is a dining area AND a super cozy family room with surrounding windows, gas fireplace and views of WEST backyard. The laundry rm, walkin pantry and bath complete the main floor. Upstairs has a kingsized master suite with its walkin closet & ensuite. Also are 2 add'l large bedrooms and full bath. Separate entrance leads downstairs to an inlaw suite with kitchen, dining, living, bdm, bath and storage or laundry. Oversized WEST deck for BBQ



Built in 1995

Essential Information

MLS® #	E4447230
Price	\$549,900
Bedrooms	4

Bathrooms	3.00
Full Baths	2
Half Baths	2
Square Footage	1,668
Acres	0.00
Year Built	1995
Type	Single Family
Sub-Type	Half Duplex
Style	2 Storey
Status	Active

Community Information

Address	9228 92 Street
Area	Edmonton
Subdivision	Bonnie Doon
City	Edmonton
County	ALBERTA
Province	AB
Postal Code	T6C 3R5

Amenities

Amenities	Deck, No Animal Home, No Smoking Home, Vinyl Windows
Parking	2 Outdoor Stalls

Interior

Interior Features	ensuite bathroom
Appliances	Dishwasher-Built-In, Dryer, Hood Fan, Oven-Microwave, Washer, Window Coverings, Refrigerators-Two, Stoves-Two
Heating	Forced Air-1, Natural Gas
Fireplace	Yes
Fireplaces	Granite Surround
Stories	3
Has Basement	Yes
Basement	Full, Finished

Exterior

Exterior	Wood, Stucco
Exterior Features	Fenced, Flat Site, Golf Nearby, Low Maintenance Landscape, Public Transportation, Schools, Shopping Nearby

Roof Asphalt Shingles
Construction Wood, Stucco
Foundation Concrete Perimeter

Additional Information

Date Listed July 11th, 2025
Days on Market 8
Zoning Zone 18



DATA IS DEEMED RELIABLE BUT IS NOT GUARANTEED ACCURATE BY THE REALTORS® ASSOCIATION OF EDMONTON. COPYRIGHT 2025 BY THE REALTORS® ASSOCIATION OF EDMONTON. ALL RIGHTS RESERVED. Trademarks are owned or controlled by the Canadian Real Estate Association (CREA) and identify real estate professionals who are members of CREA (REALTOR®, REALTORS®) and/or the quality of services they provide (MLS®, Multiple Listing Service®)

Listing information last updated on July 19th, 2025 at 11:02am MDT