

## \$194,900 - 313 13111 140 Avenue, Edmonton

MLS® #E4446116

**\$194,900**

2 Bedroom, 2.00 Bathroom, 863 sqft

Condo / Townhouse on 0.00 Acres

Pembina, Edmonton, AB

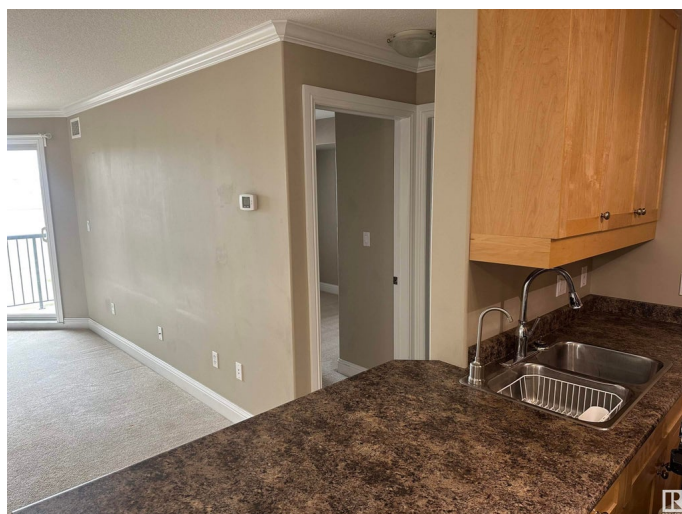
Palisades Park Villas third floor fully Air Conditioned unit with 2 bedrooms and 2 full baths. Kitchen features maple cabinets and black appliances. The Primary Bedroom is a good size and has a walk in closet as well as a full ensuite including tub and shower. Step out onto the west facing deck with natural gas for your BBQ. Includes One heated underground parking stall with a storage cage. Plenty of stores nearby and not far from the Anthony Henday and Yellowhead.

Built in 2006

### Essential Information

MLS® #	E4446116
Price	\$194,900
Bedrooms	2
Bathrooms	2.00
Full Baths	2
Square Footage	863
Acres	0.00
Year Built	2006
Type	Condo / Townhouse
Sub-Type	Lowrise Apartment
Style	Single Level Apartment
Status	Active

### Community Information



Address	313 13111 140 Avenue
Area	Edmonton
Subdivision	Pembina
City	Edmonton
County	ALBERTA
Province	AB
Postal Code	T6V 0B1

### Amenities

Amenities	Deck, Detectors Smoke, Parking-Visitor, Security Door, Storage Cage
Parking Spaces	1
Parking	Heated, Underground

### Interior

Interior Features	ensuite bathroom
Appliances	Air Conditioning-Central, Dishwasher-Built-In, Oven-Microwave, Refrigerator, Stacked Washer/Dryer, Stove-Electric, Window Coverings
Heating	Fan Coil, Natural Gas
# of Stories	4
Stories	1
Has Basement	Yes
Basement	None, No Basement

### Exterior

Exterior	Wood, Stucco
Exterior Features	Public Transportation, Shopping Nearby
Roof	Asphalt Shingles
Construction	Wood, Stucco
Foundation	Concrete Perimeter

### Additional Information

Date Listed	July 5th, 2025
Days on Market	2
Zoning	Zone 27
Condo Fee	\$437

DATA IS DEEMED RELIABLE BUT IS NOT GUARANTEED ACCURATE BY THE REALTORS® ASSOCIATION OF EDMONTON. COPYRIGHT 2025 BY THE REALTORS® ASSOCIATION OF EDMONTON. ALL RIGHTS RESERVED. Trademarks are owned or controlled by the Canadian Real Estate Association (CREA) and identify real estate professionals who are members of CREA (REALTOR®, REALTORS®) and/or the quality of services they provide (MLS®, Multiple Listing Service®)

Listing information last updated on July 7th, 2025 at 12:47am MDT