

\$299,900 - 12d Twin Terrace, Edmonton

MLS® #E4445455

\$299,900

4 Bedroom, 1.50 Bathroom, 1,152 sqft

Condo / Townhouse on 0.00 Acres

Tweddle Place, Edmonton, AB

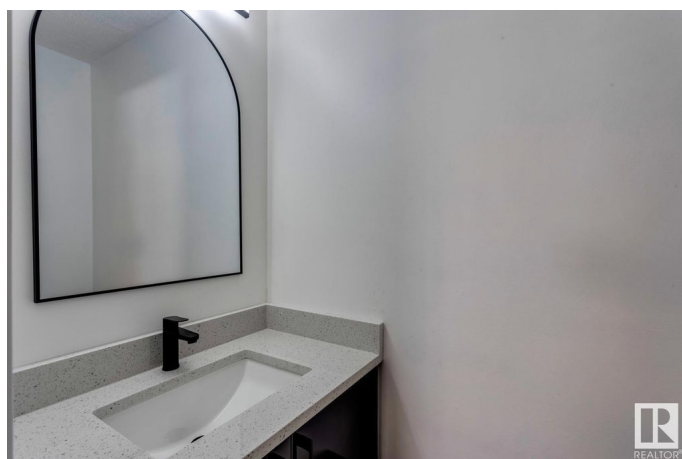
STUNNING TURN KEY PROPERTY! THIS 1151 SQ FT UNIT FEATURES OVER 1727 SQ FT OF TOTAL LIVING SPACE & HAS BEEN REMODELLED FEAT. OVER \$35,000 IN UPGRADES. Completely remodelled 2 storey townhome feat. 3 bedrooms & 2 baths. Upon entering you are greeted by modern luxury vinyl plank flooring which spans the entire main floor. Stunning chefs dream kitchen feat. an abundance of new gorgeous white cabinetry with black hardware, complimented by new QUARTZ countertops, SUBWAY tiled backsplash, along with a full set of 4 S.S appliances. Stairs & upper level feat brand new carpeting throughout. Upper level also feat 3 bedrooms, & the main 4 piece SPA LIKE bath, which has been redone with a new vanity, new mirror, new lighting, new toilet & tub, new hardware, & new Carrara tiling throughout the shower. Other upgrades include: finished basement, new B.B, new trim, designer lighting, new plumbing fixtures, new doors, new closets, new Decora plug ins & light switches, freshly painted, & professionally managed.

Built in 1975

Essential Information

MLS® # E4445455

Price \$299,900



Bedrooms	4
Bathrooms	1.50
Full Baths	1
Half Baths	1
Square Footage	1,152
Acres	0.00
Year Built	1975
Type	Condo / Townhouse
Sub-Type	Townhouse
Style	2 Storey
Status	Active

Community Information

Address	12d Twin Terrace
Area	Edmonton
Subdivision	Tweddle Place
City	Edmonton
County	ALBERTA
Province	AB
Postal Code	T6V 1V4

Amenities

Amenities	Carbon Monoxide Detectors, Detectors Smoke, Exterior Walls- 2"x6", No Animal Home, No Smoking Home, Parking-Visitor, Smart/Program. Thermostat, Vinyl Windows, See Remarks
Parking	Stall

Interior

Appliances	Dishwasher-Built-In, Dryer, Microwave Hood Fan, Refrigerator, Stove-Electric, Washer
Heating	Forced Air-1, Natural Gas
Stories	3
Has Basement	Yes
Basement	Full, Finished

Exterior

Exterior	Wood, Stucco, Vinyl
Exterior Features	Fenced, Flat Site, Golf Nearby, Landscaped, Low Maintenance Landscape, Playground Nearby, Public Transportation, Schools, Shopping Nearby, See Remarks

Roof	Asphalt Shingles
Construction	Wood, Stucco, Vinyl
Foundation	Concrete Perimeter

Additional Information

Date Listed	July 3rd, 2025
Days on Market	3
Zoning	Zone 29
Condo Fee	\$301

DATA IS DEEMED RELIABLE BUT IS NOT GUARANTEED ACCURATE BY THE REALTORS® ASSOCIATION OF EDMONTON. COPYRIGHT 2025 BY THE REALTORS® ASSOCIATION OF EDMONTON. ALL RIGHTS RESERVED.Trademarks are owned or controlled by the Canadian Real Estate Association (CREA) and identify real estate professionals who are members of CREA (REALTOR®, REALTORS®) and/or the quality of services they provide (MLS®, Multiple Listing Service®)

Listing information last updated on July 6th, 2025 at 2:02am MDT