

\$450,000 - 5307 139 Avenue, Edmonton

MLS® #E4444562

\$450,000

5 Bedroom, 3.00 Bathroom, 1,389 sqft

Single Family on 0.00 Acres

York, Edmonton, AB

This well maintained bungalow is nestled in a quiet, family friendly community & is move-in ready, perfect for a growing family or as a mortgage-helper with its in-law suite. Offering 5 bdrms, 3 full baths, & a dbl att garage, this home combines comfort and functionality. Step into a spacious Liv/Din area featuring beautiful HW flooring, ideal for entertaining. The adjacent Kitch is equipped with warm oak cabinetry and ample counter space. The Mn fl includes a generous primary bdrm with a modernized 3pc ensuite, 2 add bdrms, & a full 4pc bath. The fully dev bsmt features an in-law suite complete with 2 bdrms, a 3pc bath, & a sep living area ideal for extended fam or guests. Enjoy outdoor living in the manicured backyard that backs onto a peaceful green space perfect for family gatherings or relaxing on the deck with your favorite beverage. Upgrades include Shingles (2024) HWT(2024) Linoleum & some carpet (2015) Updated ensuite (2015) Interior paint (2015) Donâ€™t miss the opportunity to own this Home!

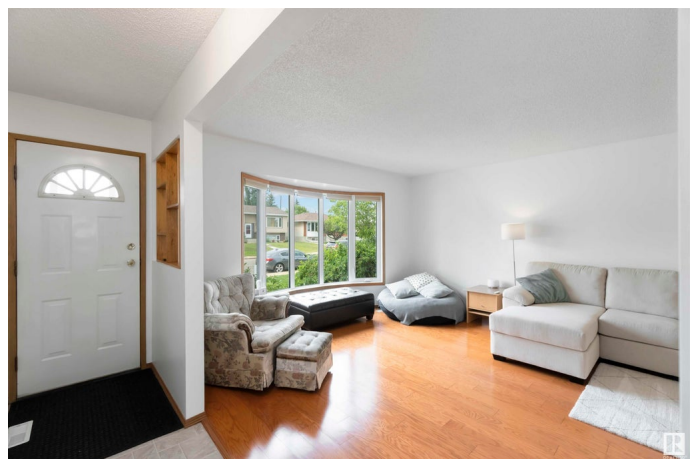
Built in 1987

Essential Information

MLS® # E4444562

Price \$450,000

Bedrooms 5



Bathrooms	3.00
Full Baths	3
Square Footage	1,389
Acres	0.00
Year Built	1987
Type	Single Family
Sub-Type	Detached Single Family
Style	Bungalow
Status	Active

Community Information

Address	5307 139 Avenue
Area	Edmonton
Subdivision	York
City	Edmonton
County	ALBERTA
Province	AB
Postal Code	T5A 4R4

Amenities

Amenities	See Remarks
Parking	Double Garage Attached

Interior

Interior Features	ensuite bathroom
Appliances	Dryer, Garage Control, Garage Opener, Hood Fan, Washer, Window Coverings, Refrigerators-Two, Stoves-Two, Dishwasher-Two
Heating	Forced Air-1, Natural Gas
Fireplace	Yes
Fireplaces	Brick Facing, Mantel
Stories	2
Has Basement	Yes
Basement	Full, Finished

Exterior

Exterior	Wood, Vinyl
Exterior Features	Fenced, Fruit Trees/Shrubs, Landscaped, No Back Lane, Playground Nearby, Public Transportation, Schools, Shopping Nearby
Roof	Asphalt Shingles

Construction	Wood, Vinyl
Foundation	Concrete Perimeter

School Information

Elementary	Father Leo Green Elem
Middle	J.J. Bowlen Jr High
High	Archbishop O'Leary High

Additional Information

Date Listed	June 26th, 2025
Days on Market	15
Zoning	Zone 02

DATA IS DEEMED RELIABLE BUT IS NOT GUARANTEED ACCURATE BY THE REALTORS® ASSOCIATION OF EDMONTON. COPYRIGHT 2025 BY THE REALTORS® ASSOCIATION OF EDMONTON. ALL RIGHTS RESERVED.Trademarks are owned or controlled by the Canadian Real Estate Association (CREA) and identify real estate professionals who are members of CREA (REALTOR®, REALTORS®) and/or the quality of services they provide (MLS®, Multiple Listing Service®)

Listing information last updated on July 11th, 2025 at 8:17pm MDT