

\$259,000 - 201 10003 87 Avenue, Edmonton

MLS® #E4443277

\$259,000

2 Bedroom, 1.00 Bathroom, 846 sqft

Condo / Townhouse on 0.00 Acres

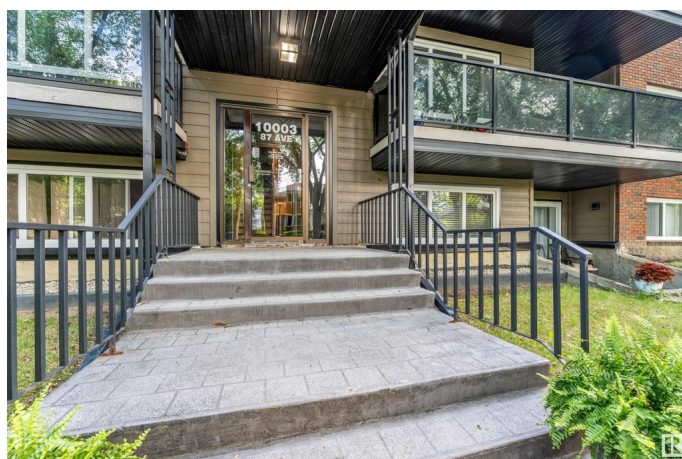
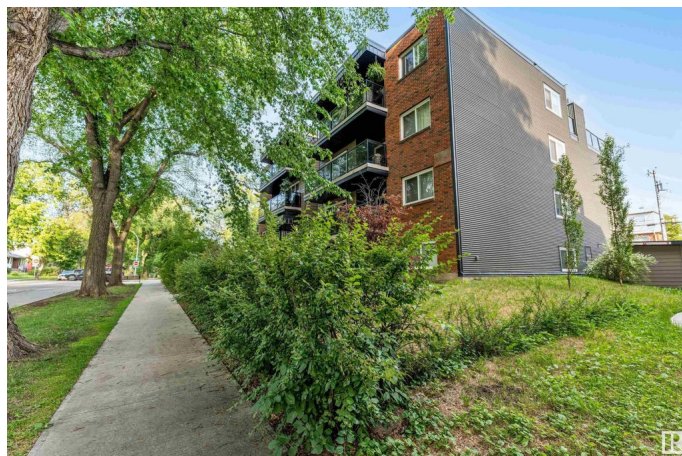
Strathcona, Edmonton, AB

FANTASTIC LOCATION! Welcome to Strathcona, one of Edmonton's most dynamic and sought-after neighborhoods. This stylishly updated upper-level condo offers 2 bedrooms and 1 bathroom and is completely move-in ready. Featuring hardwood floors, granite countertops, and custom raised kitchen cabinets, the open-concept layout is bright and functional. The kitchen is equipped with stainless steel appliances and opens onto a spacious living area with access to a large balcony—ideal for entertaining or unwinding. The primary bedroom and large windows fill the home with natural light. Just a short walk to Whyte Avenue's vibrant restaurants, cafes, boutiques, and nightlife, and only minutes from downtown, the river valley, Mill Creek Ravine, schools, and transit. Whether you're a first-time homebuyer, investor, or looking to downsize, this is a prime opportunity in an unbeatable location. Immediate possession available.

Built in 1981

Essential Information

MLS® #	E4443277
Price	\$259,000
Bedrooms	2
Bathrooms	1.00



Full Baths	1
Square Footage	846
Acres	0.00
Year Built	1981
Type	Condo / Townhouse
Sub-Type	Lowrise Apartment
Style	Single Level Apartment
Status	Active

Community Information

Address	201 10003 87 Avenue
Area	Edmonton
Subdivision	Strathcona
City	Edmonton
County	ALBERTA
Province	AB
Postal Code	T6P 2P1

Amenities

Amenities	On Street Parking, Intercom, Security Door
Parking	Stall

Interior

Appliances	Dishwasher-Built-In, Euro Washer/Dryer Combo, Microwave Hood Fan, Refrigerator, Stove-Countertop Electric, Window Coverings
Heating	Hot Water, Natural Gas
# of Stories	4
Stories	4
Has Basement	Yes
Basement	See Remarks

Exterior

Exterior	Wood, Brick, Stucco
Exterior Features	Back Lane, Playground Nearby, Public Transportation, Schools, Shopping Nearby
Roof	Unknown
Construction	Wood, Brick, Stucco
Foundation	See Remarks

School Information

Elementary	King Edward School
Middle	Allendale School
High	Strathcona School

Additional Information

Date Listed	June 19th, 2025
Days on Market	71
Zoning	Zone 15
Condo Fee	\$542

DATA IS DEEMED RELIABLE BUT IS NOT GUARANTEED ACCURATE BY THE REALTORS® ASSOCIATION OF EDMONTON. COPYRIGHT 2025 BY THE REALTORS® ASSOCIATION OF EDMONTON. ALL RIGHTS RESERVED. Trademarks are owned or controlled by the Canadian Real Estate Association (CREA) and identify real estate professionals who are members of CREA (REALTOR®, REALTORS®) and/or the quality of services they provide (MLS®, Multiple Listing Service®)

Listing information last updated on August 29th, 2025 at 11:18am MDT