

\$425,000 - 11245 69 Street, Edmonton

MLS® #E4442688

\$425,000

6 Bedroom, 2.00 Bathroom, 1,075 sqft

Single Family on 0.00 Acres

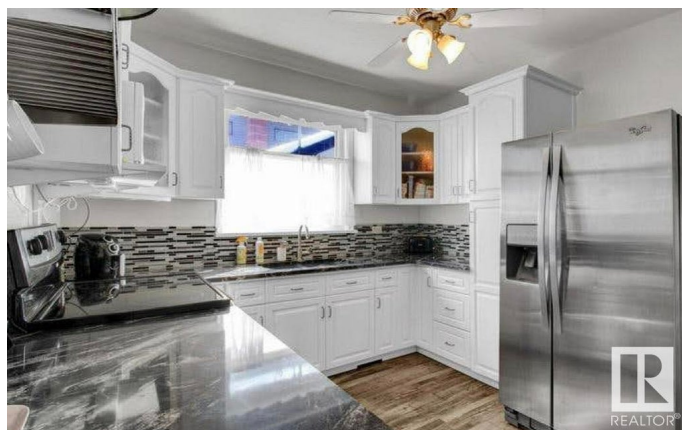
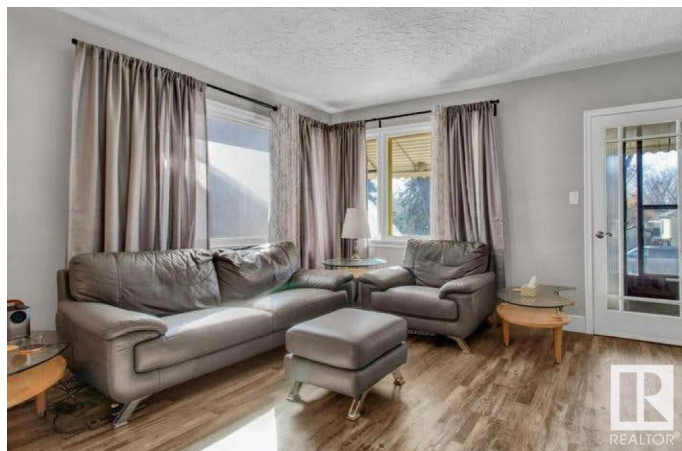
Bellevue, Edmonton, AB

Beautifully updated bungalow in the mature community of Bellevue – perfect for first time buyers, downsizers or investors! This renovated home features luxury vinyl plank flooring, fresh paint, and trim throughout. The main floor offers a bright living/dining area, a stylish new kitchen with white cabinetry, newer appliances, and granite counters, plus 3 spacious bedrooms and a fully renovated 4pc bath. The separate in-law suite in the basement includes 3 more bedrooms, a full kitchen, a 3pc bath with tiled shower, and laundry. Outside, enjoy a large composite deck and double detached garage. Fantastic location near Kind Ice Cream, Bodega, Eastglen Leisure Centre, Concordia University, and quick access to Wayne Gretzky Drive. A great option for investment or family home!

Built in 1956

Essential Information

MLS® #	E4442688
Price	\$425,000
Bedrooms	6
Bathrooms	2.00
Full Baths	2
Square Footage	1,075
Acres	0.00
Year Built	1956



Type	Single Family
Sub-Type	Detached Single Family
Style	Bungalow
Status	Active

Community Information

Address	11245 69 Street
Area	Edmonton
Subdivision	Bellevue
City	Edmonton
County	ALBERTA
Province	AB
Postal Code	T5B 1R6

Amenities

Amenities	On Street Parking, Deck, Detectors Smoke, No Smoking Home, See Remarks
Parking	Double Garage Detached, RV Parking

Interior

Appliances	Dryer, Washer, Window Coverings, Refrigerators-Two, Stoves-Two, Dishwasher-Two, Microwave Hood Fan-Two
Heating	Forced Air-1, Natural Gas
Stories	2
Has Suite	Yes
Has Basement	Yes
Basement	Full, Finished

Exterior

Exterior	Wood, Stucco
Exterior Features	Back Lane, Fenced, Flat Site, Fruit Trees/Shrubs, Landscaped, See Remarks
Roof	Asphalt Shingles
Construction	Wood, Stucco
Foundation	Concrete Perimeter

Additional Information

Date Listed	June 16th, 2025
Days on Market	26
Zoning	Zone 09

DATA IS DEEMED RELIABLE BUT IS NOT GUARANTEED ACCURATE BY THE REALTORS® ASSOCIATION OF EDMONTON. COPYRIGHT 2025 BY THE REALTORS® ASSOCIATION OF EDMONTON. ALL RIGHTS RESERVED.Trademarks are owned or controlled by the Canadian Real Estate Association (CREA) and identify real estate professionals who are members of CREA (REALTOR®, REALTORS®) and/or the quality of services they provide (MLS®, Multiple Listing Service®)

Listing information last updated on July 12th, 2025 at 4:32am MDT