

## **\$499,900 - 12232 151a Avenue, Edmonton**

MLS® #E4441960

**\$499,900**

5 Bedroom, 3.00 Bathroom, 1,527 sqft

Single Family on 0.00 Acres

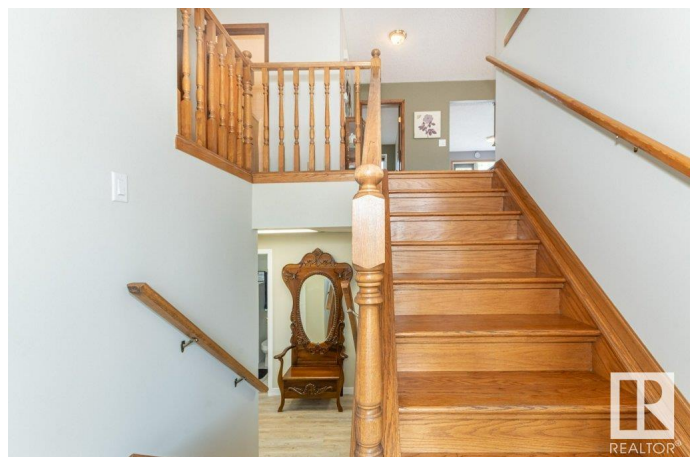
Caernarvon, Edmonton, AB

Room for the whole family! Pride of ownership shines in this Bi-level home with over 2900 sq ft of living space. Fully finished on both levels. This 5 bedroom home also has a den. Wood burning fireplace accents the living room, and Oak hardwood floors shine throughout the main level. Primary bedroom has a full ensuite with corner shower, and a walk in closet. Second bedroom also has a walk in closet. Spacious laundry offers lots of storage. With a freshly renovated family room in basement. Raised deck off of the kitchen patio doors, great for morning coffee or evening BBQ's & entertaining. Backing onto green space allows room for the kids to play and enjoy, a short walk to Lake Baranow with bike paths and seating to watch the wildlife. All located in the community of Caernarvon. Close to Castledowns YMCA, Edmonton Islamic Academy, and newly constructed high school. Easy access to the Anthony Henday for easy city commute.

Built in 1989

### **Essential Information**

MLS® #	E4441960
Price	\$499,900
Bedrooms	5
Bathrooms	3.00



Full Baths	3
Square Footage	1,527
Acres	0.00
Year Built	1989
Type	Single Family
Sub-Type	Detached Single Family
Style	Bi-Level
Status	Active

### **Community Information**

Address	12232 151a Avenue
Area	Edmonton
Subdivision	Caernarvon
City	Edmonton
County	ALBERTA
Province	AB
Postal Code	T5X 4A2

### **Amenities**

Amenities	Closet Organizers, Deck, Gazebo, Hot Water Natural Gas, Parking-Extra
Parking	Double Garage Attached

### **Interior**

Interior Features	ensuite bathroom
Appliances	Dishwasher-Built-In, Dryer, Garage Control, Garage Opener, Hood Fan, Refrigerator, Storage Shed, Stove-Electric, Vacuum Systems, Washer, Window Coverings, Curtains and Blinds
Heating	Forced Air-1, Natural Gas
Stories	2
Has Basement	Yes
Basement	Full, Finished

### **Exterior**

Exterior	Wood, Brick, Vinyl
Exterior Features	Backs Onto Park/Trees, Fenced, Flat Site, Park/Reserve, Playground Nearby, Public Swimming Pool, Public Transportation, Schools, Shopping Nearby
Roof	Asphalt Shingles
Construction	Wood, Brick, Vinyl

Foundation                      Concrete Perimeter

**Additional Information**

Date Listed                      June 12th, 2025  
Days on Market                13  
Zoning                              Zone 27

DATA IS DEEMED RELIABLE BUT IS NOT GUARANTEED ACCURATE BY THE REALTORS® ASSOCIATION OF EDMONTON. COPYRIGHT 2025 BY THE REALTORS® ASSOCIATION OF EDMONTON. ALL RIGHTS RESERVED.Trademarks are owned or controlled by the Canadian Real Estate Association (CREA) and identify real estate professionals who are members of CREA (REALTOR®, REALTORS®) and/or the quality of services they provide (MLS®, Multiple Listing Service®)  
Listing information last updated on June 25th, 2025 at 12:17am MDT