

\$137,000 - 105 6212 180 Street, Edmonton

MLS® #E4441938

\$137,000

2 Bedroom, 1.50 Bathroom, 1,073 sqft

Condo / Townhouse on 0.00 Acres

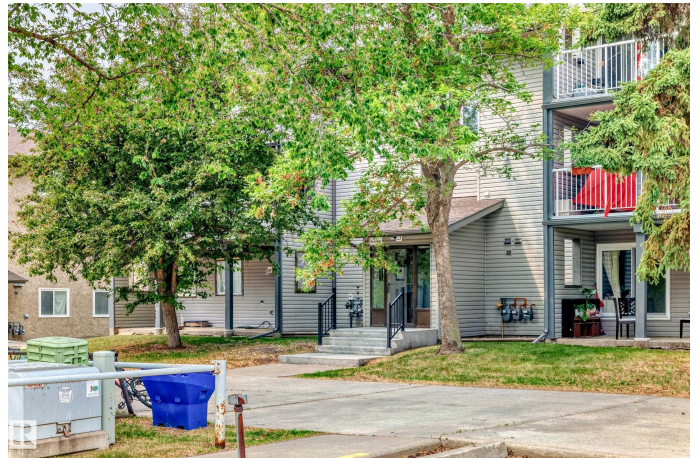
Ormsby Place, Edmonton, AB

Come check out this cozy and spacious 2 bedroom apartment. You walk into a large front entrance, open and spacious living room with plenty of sunlight. Good size dining room, Galley kitchen to serve all your cooking needs. Main bedroom with walk in closet and ensuite bathroom. There is a good size 2nd bedroom. The furnace room and storage room are located near the front entrance. There is a large patio with access to the park right outside your gate. Amazing location, close to shopping, transit, Henday and Whitemud.

Built in 1980

Essential Information

MLS® #	E4441938
Price	\$137,000
Bedrooms	2
Bathrooms	1.50
Full Baths	1
Half Baths	1
Square Footage	1,073
Acres	0.00
Year Built	1980
Type	Condo / Townhouse
Sub-Type	Lowrise Apartment
Style	Single Level Apartment
Status	Active



Community Information

Address	105 6212 180 Street
Area	Edmonton
Subdivision	Ormsby Place
City	Edmonton
County	ALBERTA
Province	AB
Postal Code	T5T 2T2

Amenities

Amenities	Detectors Smoke, Hot Water Natural Gas, Parking-Plug-Ins, Storage-In-Suite
Parking	Stall

Interior

Interior Features	ensuite bathroom
Appliances	Dishwasher-Built-In, Refrigerator, Stove-Electric
Heating	Forced Air-1, Natural Gas
# of Stories	3
Stories	3
Has Basement	Yes
Basement	None, No Basement

Exterior

Exterior	Wood, Vinyl
Exterior Features	Backs Onto Park/Trees, Landscaped, Playground Nearby, Public Transportation, Schools, Shopping Nearby
Roof	Asphalt Shingles
Construction	Wood, Vinyl
Foundation	Concrete Perimeter

Additional Information

Date Listed	June 12th, 2025
Days on Market	79
Zoning	Zone 20
Condo Fee	\$495

DATA IS DEEMED RELIABLE BUT IS NOT GUARANTEED ACCURATE BY THE REALTORS® ASSOCIATION OF EDMONTON. COPYRIGHT 2025 BY THE REALTORS® ASSOCIATION OF EDMONTON. ALL RIGHTS RESERVED. Trademarks are owned or controlled by the Canadian Real Estate Association (CREA) and identify real estate professionals who are members of CREA (REALTOR®, REALTORS®) and/or the quality of services they

provide (MLS® , Multiple Listing Service®)
Listing information last updated on August 30th, 2025 at 3:32am MDT