

## **\$1,099,000 - 5410 110 Street, Edmonton**

MLS® #E4440588

**\$1,099,000**

3 Bedroom, 2.50 Bathroom, 2,627 sqft

Single Family on 0.00 Acres

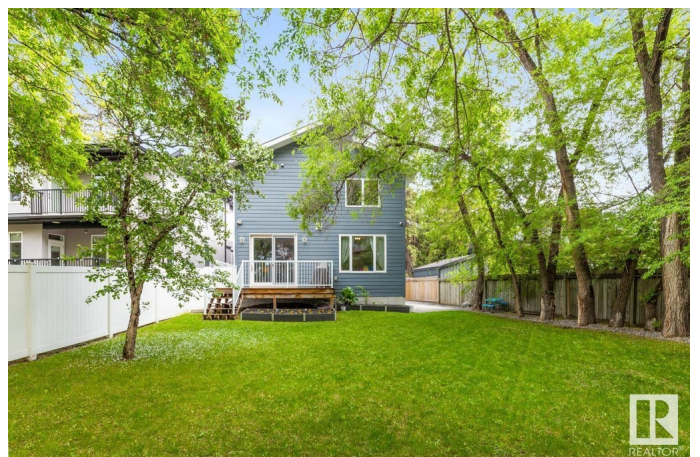
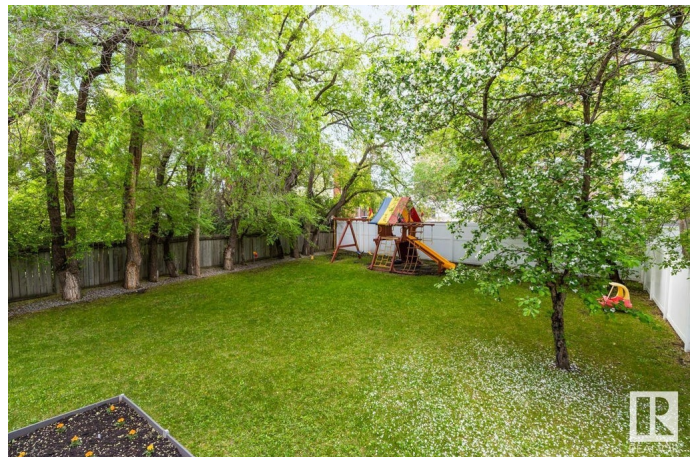
Pleasantview (Edmonton), Edmonton, AB

**THE BEST VALUE IN PLEASANTVIEW !!!**  
**INFILL with DOUBLE ATTACHED GARAGE**  
on a huge SW PIE SHAPED LOT! A great central location just minutes to U of A Hospital and downtown. The main floor offers a functional floor plan w/ a modern white kitchen, large dining space w/ custom wood slider, plus a 2 sided fireplace & spacious great room. Built-in cabinetry in the mudroom and butler's pantry offers ample storage. The main floor den is opposite a fabulous custom staircase w/ open risers and contemporary glass railings. Up to the primary bedroom with a view of large mature trees and a double entrance to the luxurious ensuite bath. Heated floors, double vanities, custom shower, plus HIS and HER walk-in closets. It's even connected to the laundry room! Two additional bedrooms complete with walk-in closets and a spacious bonus room round out the top floor. The backyard is truly an oasis featuring a composite deck, garden beds, and loads of green grass to enjoy the sunny SW exposure. Your short commute could start now!

Built in 2017

### **Essential Information**

MLS® #	E4440588
Price	\$1,099,000



Bedrooms	3
Bathrooms	2.50
Full Baths	2
Half Baths	1
Square Footage	2,627
Acres	0.00
Year Built	2017
Type	Single Family
Sub-Type	Detached Single Family
Style	2 Storey
Status	Active

### Community Information

Address	5410 110 Street
Area	Edmonton
Subdivision	Pleasantview (Edmonton)
City	Edmonton
County	ALBERTA
Province	AB
Postal Code	T6H 3E1

### Amenities

Amenities	Air Conditioner, Deck, No Animal Home, No Smoking Home, Infill Property, Natural Gas BBQ Hookup
Parking	Double Garage Attached

### Interior

Interior Features	ensuite bathroom
Appliances	Air Conditioning-Central, Alarm/Security System, Dishwasher-Built-In, Dryer, Garage Control, Garage Opener, Hood Fan, Oven-Built-In, Oven-Microwave, Refrigerator, Stove-Countertop Electric, Vacuum Systems, Washer, Window Coverings, Wine/Beverage Cooler
Heating	Forced Air-1, Natural Gas
Fireplace	Yes
Fireplaces	Double Sided
Stories	2
Has Basement	Yes
Basement	Full, Unfinished

### Exterior

Exterior	Wood, Stucco, Hardie Board Siding
Exterior Features	Fenced, Flat Site, Fruit Trees/Shrubs, Landscaped, No Back Lane, Playground Nearby, Public Transportation, Schools, Shopping Nearby
Roof	Asphalt Shingles
Construction	Wood, Stucco, Hardie Board Siding
Foundation	Concrete Perimeter

### **School Information**

Elementary	Lendrum Elementary School
Middle	Avalon Jr High
High	Strathcona High School

### **Additional Information**

Date Listed	June 5th, 2025
Days on Market	12
Zoning	Zone 15

DATA IS DEEMED RELIABLE BUT IS NOT GUARANTEED ACCURATE BY THE REALTORS® ASSOCIATION OF EDMONTON. COPYRIGHT 2025 BY THE REALTORS® ASSOCIATION OF EDMONTON. ALL RIGHTS RESERVED. Trademarks are owned or controlled by the Canadian Real Estate Association (CREA) and identify real estate professionals who are members of CREA (REALTOR®, REALTORS®) and/or the quality of services they provide (MLS®, Multiple Listing Service®)

Listing information last updated on June 17th, 2025 at 12:32pm MDT