

\$399,900 - 12122 125 Street, Edmonton

MLS® #E4438702

\$399,900

4 Bedroom, 2.50 Bathroom, 1,513 sqft

Single Family on 0.00 Acres

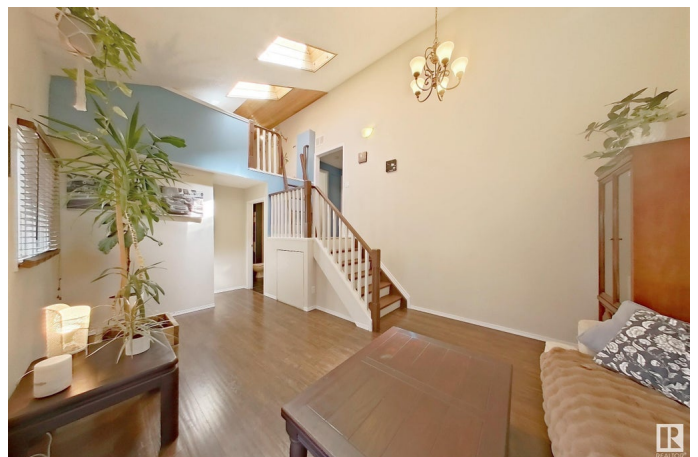
Prince Charles, Edmonton, AB

UNIQUE 2 STOREY SPLIT WITH WEST YARD AND DOUBLE GARAGE. CONVENIENTLY LOCATED CLOSE TO SCHOOLS, TRANSPORTATION, HALF A BLOCK TO A PARK AND GOOD COMMUTE TO DOWNTOWN. 696.63 sq.m. lot is RF3 zoned. CLEAN AND MODERNIZED HOME WITH 3 BEDROOMS, AN OFFICE, CUTE LOFT AND 2.5 BATHROOMS. LIVING ROOM HAS FIRE PLACE AND FAMILY ROOM C/W VAULTED CEILING. NICE EAT-IN KITCHEN. PRICE INCLUDES ALL APPLIANCES AND WINDOW COVERINGS. IT IS YOUR MOVE!

Built in 1948

Essential Information

MLS® #	E4438702
Price	\$399,900
Bedrooms	4
Bathrooms	2.50
Full Baths	2
Half Baths	1
Square Footage	1,513
Acres	0.00
Year Built	1948
Type	Single Family
Sub-Type	Detached Single Family



Style	2 Storey Split
Status	Active

Community Information

Address	12122 125 Street
Area	Edmonton
Subdivision	Prince Charles
City	Edmonton
County	ALBERTA
Province	AB
Postal Code	T5L 0S6

Amenities

Amenities	Vaulted Ceiling, See Remarks
Parking	Double Garage Detached

Interior

Appliances	Alarm/Security System, Dishwasher-Built-In, Dryer, Hood Fan, Refrigerator, Stove-Electric, Vacuum Systems, Washer, Window Coverings
Heating	Forced Air-1, Natural Gas
Fireplace	Yes
Fireplaces	See Remarks
Stories	3
Has Basement	Yes
Basement	Partial, Partially Finished

Exterior

Exterior	Wood, Vinyl
Exterior Features	Back Lane, Public Transportation, Schools
Roof	Asphalt Shingles
Construction	Wood, Vinyl
Foundation	Concrete Perimeter

Additional Information

Date Listed	May 27th, 2025
Days on Market	29
Zoning	Zone 04

DATA IS DEEMED RELIABLE BUT IS NOT GUARANTEED ACCURATE BY THE REALTORS® ASSOCIATION OF EDMONTON. COPYRIGHT 2025 BY THE REALTORS® ASSOCIATION OF EDMONTON. ALL RIGHTS

RESERVED.Trademarks are owned or controlled by the Canadian Real Estate Association (CREA) and identify real estate professionals who are members of CREA (REALTOR®, REALTORS®) and/or the quality of services they provide (MLS®, Multiple Listing Service®)

Listing information last updated on June 25th, 2025 at 3:32am MDT