

\$679,900 - 4727 139 Street, Edmonton

MLS® #E4437801

\$679,900

4 Bedroom, 2.50 Bathroom, 1,464 sqft

Single Family on 0.00 Acres

Brookside, Edmonton, AB

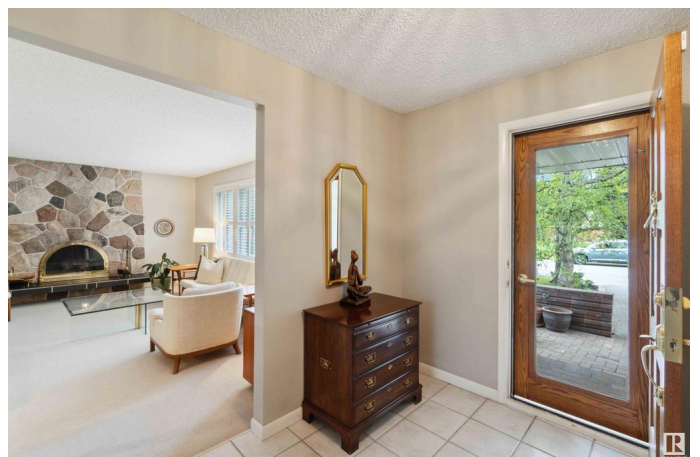
BROOKSIDES FINEST! Located on a massive lot, this 4 bedroom, 3 bathroom beautiful bungalow offers over 2,500 sq ft of quality living space! The main floor features a spacious living room with a cozy wood-burning fireplace, a large kitchen with stainless steel appliances, and convenient main floor laundry. The primary bedroom includes a private 2-piece ensuite, accompanied by two additional bedrooms and a 4-piece bathroom. Carpet and tile flooring flow throughout. The fully finished basement boasts a large entertaining area with a wet bar, an extra bedroom, another full bathroom, and a generous storage room. Step outside to a beautifully landscaped backyard with paver stones, mature trees, shrubs, garden beds, and a garden shed. A double attached garage provides added convenience. Enjoy nearby parks, a creek, scenic walking trails, and easy access to major roads including Whitemud Drive and Terwillegar Drive—making this home the perfect balance of space, comfort, and location. All this home needs is YOU!

Built in 1968

Essential Information

MLS® # E4437801

Price \$679,900



Bedrooms	4
Bathrooms	2.50
Full Baths	2
Half Baths	1
Square Footage	1,464
Acres	0.00
Year Built	1968
Type	Single Family
Sub-Type	Detached Single Family
Style	Bungalow
Status	Active

Community Information

Address	4727 139 Street
Area	Edmonton
Subdivision	Brookside
City	Edmonton
County	ALBERTA
Province	AB
Postal Code	T6H 3Z3

Amenities

Amenities	Air Conditioner, Detectors Smoke, Parking-Extra, Smart/Program. Thermostat, Wet Bar
Parking Spaces	4
Parking	Double Garage Attached

Interior

Interior Features	ensuite bathroom
Appliances	Dishwasher-Built-In, Dryer, Garage Control, Garage Opener, Hood Fan, Refrigerator, Stove-Electric, Washer, Window Coverings
Heating	Forced Air-1, Natural Gas
Fireplace	Yes
Fireplaces	Glass Door, Mantel, Stone Facing
Stories	2
Has Basement	Yes
Basement	Full, Finished

Exterior

Exterior	Wood, Brick, Vinyl
Exterior Features	Fenced, Flat Site, Golf Nearby, Landscaped, Level Land, Park/Reserve, Playground Nearby, Public Transportation, Schools, Shopping Nearby, Ski Hill Nearby, Treed Lot, Vegetable Garden
Roof	Asphalt Shingles
Construction	Wood, Brick, Vinyl
Foundation	Concrete Perimeter

School Information

Elementary	Brookside School
Middle	Riverbend School
High	Lillian Osborne School

Additional Information

Date Listed	May 22nd, 2025
Days on Market	31
Zoning	Zone 14

DATA IS DEEMED RELIABLE BUT IS NOT GUARANTEED ACCURATE BY THE REALTORS® ASSOCIATION OF EDMONTON. COPYRIGHT 2025 BY THE REALTORS® ASSOCIATION OF EDMONTON. ALL RIGHTS RESERVED.Trademarks are owned or controlled by the Canadian Real Estate Association (CREA) and identify real estate professionals who are members of CREA (REALTOR®, REALTORS®) and/or the quality of services they provide (MLS®, Multiple Listing Service®)

Listing information last updated on June 22nd, 2025 at 3:17am MDT