

\$214,900 - 127 Londonderry Square, Edmonton

MLS® #E4435550

\$214,900

3 Bedroom, 1.50 Bathroom, 1,167 sqft

Condo / Townhouse on 0.00 Acres

Kilkenny, Edmonton, AB

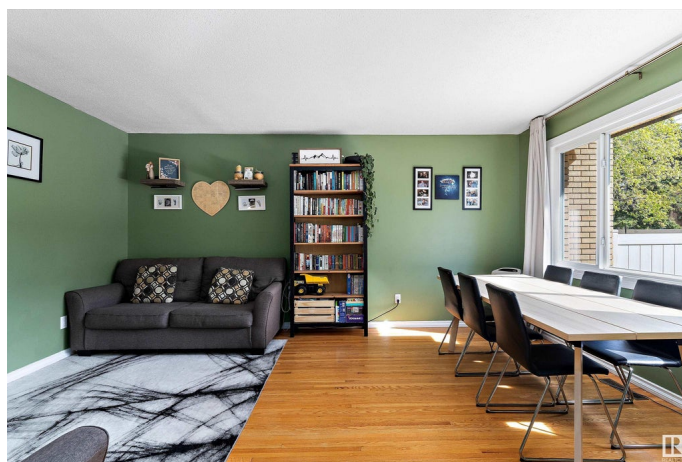
Build Your Legacy! With almost 1700 sqft of fully developed living space, this lovingly cared for 2 storey home blends comfort, style, and thoughtful updates. Step into a bright eat-in kitchen with white cabinetry, abundant natural light, and newer appliances including a fridge and dishwasher. Rich hardwood, laminate and ceramic tile floors run throughout, complemented by refreshed paint and updated lighting that create a welcoming atmosphere. The two bathrooms have been tastefully updated, while the second floor offers 3 spacious bedrooms with generous closets. Enjoy peace of mind with newer mechanicals, including a high-efficiency furnace, hot water on demand, water purification system, updated windows, as well as a newer washer and dryer in the fully finished basement. The east-facing fenced yard is a private retreat in a quiet, well-maintained complex—just steps from schools, parks, transit, recreation, and shopping, with easy access to the military base, Henday and the Yellowhead. Welcome Home!

Built in 1968

Essential Information

MLS® # E4435550

Price \$214,900



Bedrooms	3
Bathrooms	1.50
Full Baths	1
Half Baths	1
Square Footage	1,167
Acres	0.00
Year Built	1968
Type	Condo / Townhouse
Sub-Type	Townhouse
Style	2 Storey
Status	Active

Community Information

Address	127 Londonderry Square
Area	Edmonton
Subdivision	Kilkenny
City	Edmonton
County	ALBERTA
Province	AB
Postal Code	T5C 3C4

Amenities

Amenities	Closet Organizers, Hot Water Instant, Hot Water Tankless, No Animal Home, No Smoking Home, Vinyl Windows
Parking	Stall

Interior

Appliances	Dishwasher-Portable, Dryer, Refrigerator, Stove-Electric, Washer, Window Coverings
Heating	Forced Air-1, Natural Gas
Stories	3
Has Basement	Yes
Basement	Full, Finished

Exterior

Exterior	Wood, Brick
Exterior Features	Fenced, Landscaped, Low Maintenance Landscape, Picnic Area, Playground Nearby, Public Transportation, Schools, Shopping Nearby
Roof	Asphalt Shingles

Construction	Wood, Brick
Foundation	Concrete Perimeter

Additional Information

Date Listed	May 9th, 2025
Days on Market	3
Zoning	Zone 02
Condo Fee	\$346

DATA IS DEEMED RELIABLE BUT IS NOT GUARANTEED ACCURATE BY THE REALTORS® ASSOCIATION OF EDMONTON. COPYRIGHT 2025 BY THE REALTORS® ASSOCIATION OF EDMONTON. ALL RIGHTS RESERVED.Trademarks are owned or controlled by the Canadian Real Estate Association (CREA) and identify real estate professionals who are members of CREA (REALTOR®, REALTORS®) and/or the quality of services they provide (MLS®, Multiple Listing Service®)

Listing information last updated on May 12th, 2025 at 8:02am MDT