

\$139,900 - 108 1945 105 Street, Edmonton

MLS® #E4435395

\$139,900

2 Bedroom, 1.50 Bathroom, 1,045 sqft

Condo / Townhouse on 0.00 Acres

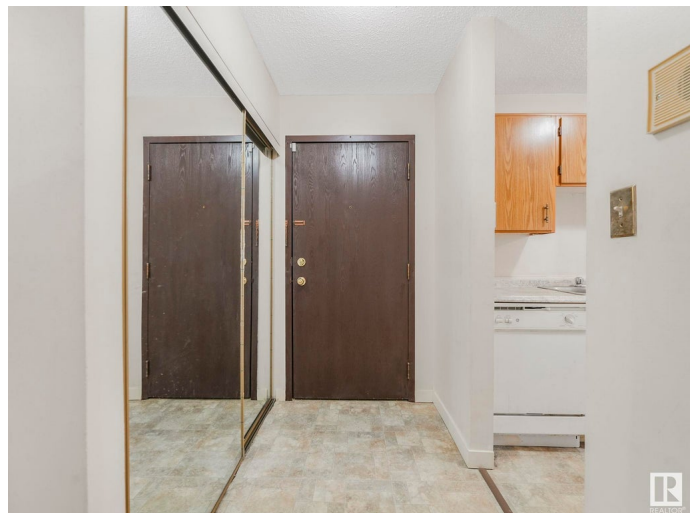
Keheewin, Edmonton, AB

Location, location, location! Welcome to this 2 bedroom 1.5 bathroom condo in South Edmonton across from an elementary school and minutes away from South Edmonton Common! Stepping into this unit you have an open kitchen with lots of cupboard/counter space and a dishwasher, open dining and living room. From your living room you have easy access to your ground floor covered terrace. Down the hall is a spacious bedroom with a closet and then your primary bedroom with a closet and 2 pc ensuite. At the end of the hall is your main 4 pc bathroom. The unit includes in-unit storage with laundry hookups for a potential washer/dryer. The condo fee of \$638.50 includes water/heat, maintenance and 1 parking stall out front. Bus stop outside of unit, mins from Century LRT, QE2, Anthony Henday or the Airport! If you are looking to own an affordable 2 bedroom condo in South Edmonton, this is the one!

Built in 1981

Essential Information

| | |
|------------|-----------|
| MLS® # | E4435395 |
| Price | \$139,900 |
| Bedrooms | 2 |
| Bathrooms | 1.50 |
| Full Baths | 1 |



| | |
|----------------|------------------------|
| Half Baths | 1 |
| Square Footage | 1,045 |
| Acres | 0.00 |
| Year Built | 1981 |
| Type | Condo / Townhouse |
| Sub-Type | Lowrise Apartment |
| Style | Single Level Apartment |
| Status | Active |

Community Information

| | |
|-------------|---------------------|
| Address | 108 1945 105 Street |
| Area | Edmonton |
| Subdivision | Keheewin |
| City | Edmonton |
| County | ALBERTA |
| Province | AB |
| Postal Code | T6J 5N6 |

Amenities

| | |
|----------------|--|
| Amenities | Off Street Parking, Patio, Security Door |
| Parking Spaces | 1 |
| Parking | Stall |

Interior

| | |
|-------------------|---|
| Interior Features | ensuite bathroom |
| Appliances | Dishwasher-Built-In, Refrigerator, Stove-Electric |
| Heating | Baseboard, Hot Water, Natural Gas |
| # of Stories | 4 |
| Stories | 1 |
| Has Basement | Yes |
| Basement | None, No Basement |

Exterior

| | |
|-------------------|--|
| Exterior | Wood, Vinyl |
| Exterior Features | Flat Site, Landscaped, Level Land, Playground Nearby, Schools, Shopping Nearby |
| Roof | Asphalt Shingles |
| Construction | Wood, Vinyl |
| Foundation | Concrete Perimeter |

School Information

| | |
|------------|-----------------------|
| Elementary | Keheewin School |
| Middle | D.S. MacKenzie School |
| High | Harry Ainlay School |

Additional Information

| | |
|----------------|---------------|
| Date Listed | May 8th, 2025 |
| Days on Market | 1 |
| Zoning | Zone 16 |
| Condo Fee | \$639 |

DATA IS DEEMED RELIABLE BUT IS NOT GUARANTEED ACCURATE BY THE REALTORS® ASSOCIATION OF EDMONTON. COPYRIGHT 2025 BY THE REALTORS® ASSOCIATION OF EDMONTON. ALL RIGHTS RESERVED.Trademarks are owned or controlled by the Canadian Real Estate Association (CREA) and identify real estate professionals who are members of CREA (REALTOR®, REALTORS®) and/or the quality of services they provide (MLS®, Multiple Listing Service®)

Listing information last updated on May 9th, 2025 at 7:47pm MDT