

\$495,000 - 1132 177 Street, Edmonton

MLS® #E4434759

\$495,000

3 Bedroom, 3.50 Bathroom, 1,380 sqft
Single Family on 0.00 Acres

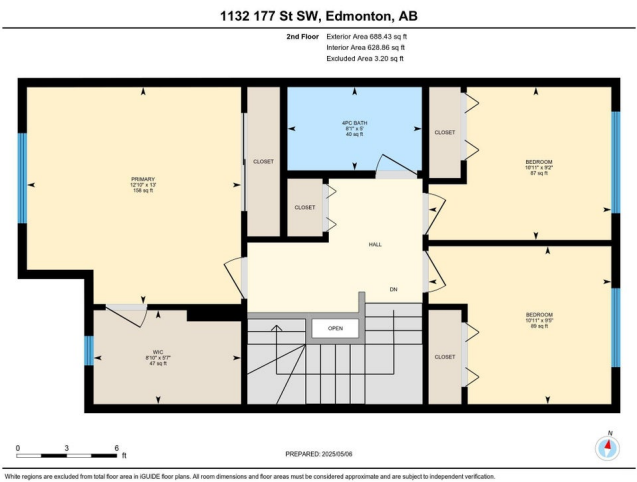
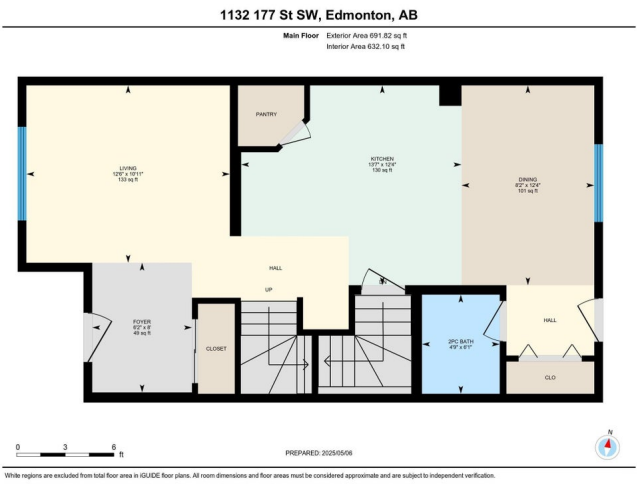
Windermere, Edmonton, AB

This well-maintained 2-story home in the desirable Windermere community of Southwest Edmonton, situated on a quiet street, boasts 1380 sqft above-grade living space, features 3 bedrooms, 3.5 baths, an office, and a double detached garage. A spacious entryway leads to the bright living room. Open concept floor plan gives direct access to the kitchen featuring stainless steel appliances and a pantry. Formal dining room leads to the west-facing backyard and a fancy deck— perfect for relaxing and entertaining. A 2-pc bath completes the main floor. Upstairs, you'll find 3 spacious bedrooms and a 4-pc shared bath, with the primary bedroom featuring a 4-pc ensuite. The fully developed basement adds extra living space, complete with a dedicated office and an additional 3-pc bathroom. Enjoy access to fantastic amenities nearby, including parks, schools, shopping, and public transportation. Quick access to the Henday.

Built in 2013

Essential Information

MLS® #	E4434759
Price	\$495,000
Bedrooms	3
Bathrooms	3.50



Full Baths	3
Half Baths	1
Square Footage	1,380
Acres	0.00
Year Built	2013
Type	Single Family
Sub-Type	Detached Single Family
Style	2 Storey
Status	Active

Community Information

Address	1132 177 Street
Area	Edmonton
Subdivision	Windermere
City	Edmonton
County	ALBERTA
Province	AB
Postal Code	T6W 1Z9

Amenities

Amenities	On Street Parking, Deck, Detectors Smoke, No Animal Home, No Smoking Home
Parking	Double Garage Detached

Interior

Interior Features	ensuite bathroom
Appliances	Dishwasher-Built-In, Dryer, Microwave Hood Fan, Refrigerator, Stove-Electric, Washer, Window Coverings
Heating	Forced Air-1, Natural Gas
Stories	3
Has Basement	Yes
Basement	Full, Finished

Exterior

Exterior	Wood, Stone, Vinyl
Exterior Features	Fenced, Golf Nearby, Landscaped, Playground Nearby, Public Transportation, Schools, Shopping Nearby
Roof	Asphalt Shingles
Construction	Wood, Stone, Vinyl

Foundation Concrete Perimeter

Additional Information

Date Listed May 6th, 2025

Days on Market 4

Zoning Zone 56

DATA IS DEEMED RELIABLE BUT IS NOT GUARANTEED ACCURATE BY THE REALTORS® ASSOCIATION OF EDMONTON. COPYRIGHT 2025 BY THE REALTORS® ASSOCIATION OF EDMONTON. ALL RIGHTS RESERVED.Trademarks are owned or controlled by the Canadian Real Estate Association (CREA) and identify real estate professionals who are members of CREA (REALTOR®, REALTORS®) and/or the quality of services they provide (MLS®, Multiple Listing Service®)

Listing information last updated on May 10th, 2025 at 12:02am MDT