

## \$189,900 - 231 Roseland Village, Edmonton

---

MLS® #E4434027

**\$189,900**

3 Bedroom, 1.50 Bathroom, 1,098 sqft

Condo / Townhouse on 0.00 Acres

Northmount (Edmonton), Edmonton, AB

You've just run out of reasons to rent! Here is a great opportunity to own a 3 bedroom townhome in a great location. This end unit is right across the street from an elementary school, park, and playground. Upgrades to this home include kitchen cabinets, some flooring, paint, and high efficient furnace. Reasonable condo fees make this an affordable first home, or would make a great investment!

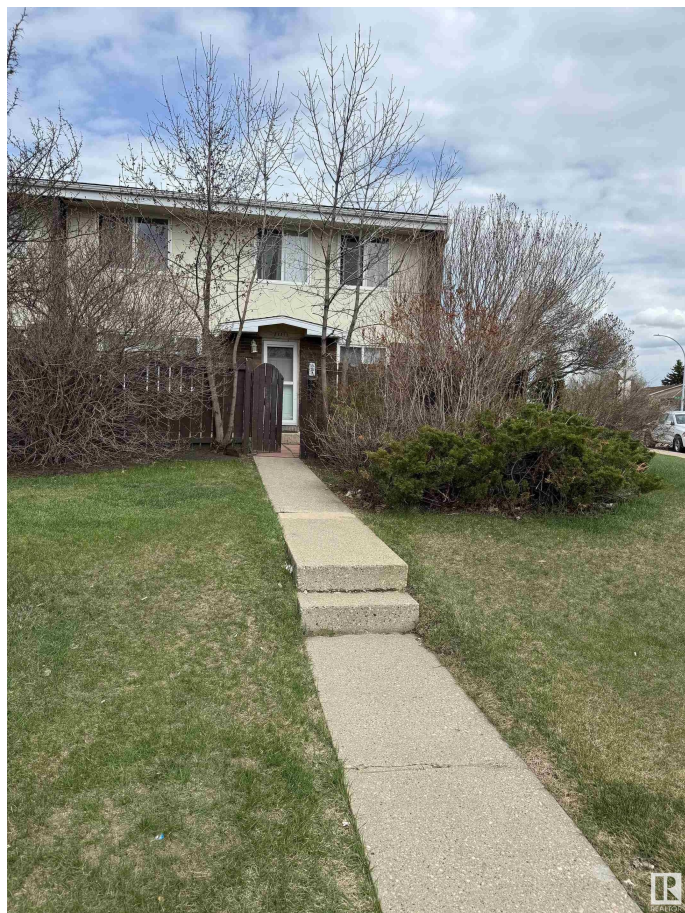
Built in 1969

### Essential Information

MLS® #	E4434027
Price	\$189,900
Bedrooms	3
Bathrooms	1.50
Full Baths	1
Half Baths	1
Square Footage	1,098
Acres	0.00
Year Built	1969
Type	Condo / Townhouse
Sub-Type	Townhouse
Style	2 Storey
Status	Active

### Community Information

Address 231 Roseland Village



Area	Edmonton
Subdivision	Northmount (Edmonton)
City	Edmonton
County	ALBERTA
Province	AB
Postal Code	T5E 5R6

**Amenities**

Amenities	No Animal Home, Parking-Pl
Parking	Stall

**Interior**

Appliances	Dryer, Refrigerator, Stove-Ele
Heating	Forced Air-1, Natural Gas
Stories	2
Has Basement	Yes
Basement	Full, Partially Finished

**Exterior**

Exterior	Wood, Brick
Exterior Features	Fenced, Park/Reserve, Pla Schools, Shopping Nearby
Roof	Asphalt Shingles
Construction	Wood, Brick
Foundation	Concrete Perimeter

**Additional Information**

Date Listed	May 2nd, 2025
Days on Market	1
Zoning	Zone 02
Condo Fee	\$300

DATA IS DEEMED RELIABLE BUT IS NOT GUARANTEED ACCURATE BY THE REALTORS® ASSOCIATION OF EDMONTON. COPYRIGHT 2025 BY THE REALTORS® ASSOCIATION OF EDMONTON. ALL RIGHTS RESERVED.Trademarks are owned or controlled by the Canadian Real Estate Association (CREA) and identify real estate professionals who are members of CREA (REALTOR®, REALTORS®) and/or the quality of services they provide (MLS®, Multiple Listing Service®)

Listing information last updated on May 3rd, 2025 at 5:02pm MDT

