

\$464,900 - 4347 68 Street, Edmonton

MLS® #E4433990

\$464,900

4 Bedroom, 2.50 Bathroom, 2,185 sqft

Single Family on 0.00 Acres

Michaels Park, Edmonton, AB

Wonderful family home in a quiet cul-de-sac location. Boasts a large double garage off the lane, large kitchen, 4 bedrooms, a family room and a living room. Shingles, furnace, H2O tank have all been replaced. A fantastic home for the large family.

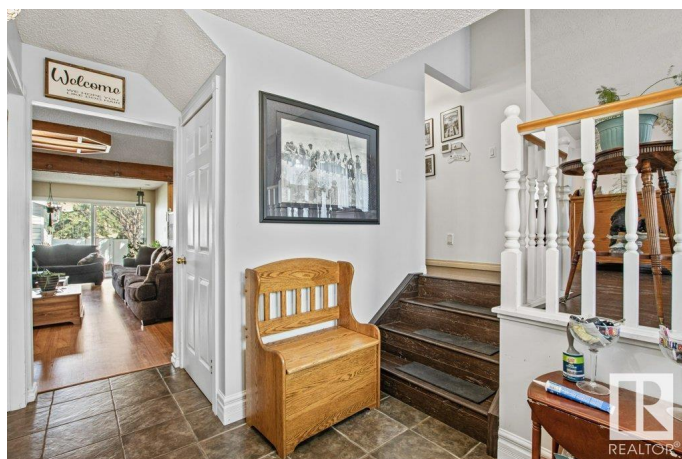
Built in 1974

Essential Information

| | |
|----------------|------------------------|
| MLS® # | E4433990 |
| Price | \$464,900 |
| Bedrooms | 4 |
| Bathrooms | 2.50 |
| Full Baths | 2 |
| Half Baths | 1 |
| Square Footage | 2,185 |
| Acres | 0.00 |
| Year Built | 1974 |
| Type | Single Family |
| Sub-Type | Detached Single Family |
| Style | 4 Level Split |
| Status | Active |

Community Information

| | |
|-------------|----------------|
| Address | 4347 68 Street |
| Area | Edmonton |
| Subdivision | Michaels Park |



| | |
|-------------|----------|
| City | Edmonton |
| County | ALBERTA |
| Province | AB |
| Postal Code | T6K 0T7 |

Amenities

| | |
|----------------|------------------------|
| Amenities | Air Conditioner, Deck |
| Parking Spaces | 6 |
| Parking | Double Garage Detached |

Interior

| | |
|--------------|--|
| Appliances | Air Conditioning-Central, Dishwasher-Built-In, Dryer, Garage Control, Garage Opener, Refrigerator, Storage Shed, Stove-Electric, Vacuum System Attachments, Washer, Window Coverings |
| Heating | Forced Air-1, Natural Gas |
| Fireplace | Yes |
| Fireplaces | Brick Facing, Glass Door |
| Stories | 4 |
| Has Basement | Yes |
| Basement | Full, Partially Finished |

Exterior

| | |
|-------------------|--|
| Exterior | Wood, Brick, Stucco |
| Exterior Features | Back Lane, Fenced, Flat Site, Public Transportation, Shopping Nearby |
| Roof | Asphalt Shingles |
| Construction | Wood, Brick, Stucco |
| Foundation | Concrete Perimeter |

School Information

| | |
|------------|------------------------|
| Elementary | Malcolm Tweddle School |
| Middle | Edith Rogers School |
| High | W.P. Wagner School |

Additional Information

| | |
|----------------|---------------|
| Date Listed | May 1st, 2025 |
| Days on Market | 2 |
| Zoning | Zone 29 |

DATA IS DEEMED RELIABLE BUT IS NOT GUARANTEED ACCURATE BY THE REALTORS® ASSOCIATION OF EDMONTON. COPYRIGHT 2025 BY THE REALTORS® ASSOCIATION OF EDMONTON. ALL RIGHTS RESERVED. Trademarks are owned or controlled by the Canadian Real Estate Association (CREA) and identify real

estate professionals who are members of CREA (REALTOR®®, REALTORS®®) and/or the quality of services they provide (MLS®®, Multiple Listing Service®®)

Listing information last updated on May 3rd, 2025 at 9:17pm MDT