

## **\$398,000 - 16533 105a Avenue, Edmonton**

MLS® #E4433514

**\$398,000**

4 Bedroom, 2.50 Bathroom, 1,047 sqft

Single Family on 0.00 Acres

Britannia Youngstown, Edmonton, AB

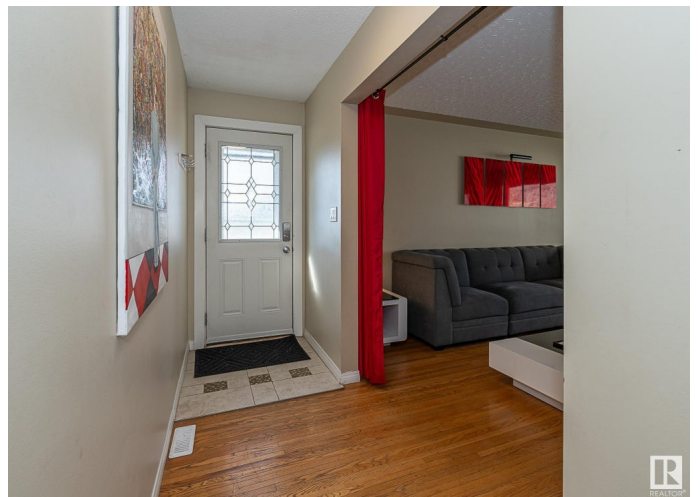
Nestled on a tranquil, tree-lined corner lot in Britannia Youngstown, this extensively renovated 4-bedroom bungalow offers a harmonious blend of classic charm and modern upgrades. The main floor showcases gleaming refinished hardwood floors in the spacious living and dining areas, complemented by a brand-new cherry wood kitchen featuring stylish backsplash, abundant cabinetry, and ample countertop space. Two generously sized bedrooms with new carpeting are also on the main floor, including a master suite with a cozy nook and walk-in closet. The completely updated bathroom boasts a granite-top vanity, new flooring, and a Bath Fitter acrylic bathtub. The fully finished basement includes two additional large bedrooms, a 3-piece bathroom, a 2-piece ensuite, a sizable family room, and ample storage in the utility room. Exterior highlights comprise a small concrete patio near the back door, a double detached garage, and a prime location close to schools, parks, shopping centers, and public transit.

Built in 1959

### **Essential Information**

MLS® # E4433514

Price \$398,000



Bedrooms	4
Bathrooms	2.50
Full Baths	2
Half Baths	1
Square Footage	1,047
Acres	0.00
Year Built	1959
Type	Single Family
Sub-Type	Detached Single Family
Style	Bungalow
Status	Active

### Community Information

Address	16533 105a Avenue
Area	Edmonton
Subdivision	Britannia Youngstown
City	Edmonton
County	ALBERTA
Province	AB
Postal Code	T5P 0V6

### Amenities

Amenities	No Animal Home, No Smoking Home
Parking Spaces	4
Parking	Double Garage Detached

### Interior

Interior Features	ensuite bathroom
Appliances	Dryer, Hood Fan, Refrigerator, Stove-Electric, Washer
Heating	Forced Air-1, Natural Gas
Stories	2
Has Basement	Yes
Basement	Full, Finished

### Exterior

Exterior	Wood, Vinyl
Exterior Features	Paved Lane, Playground Nearby, Public Swimming Pool, Public Transportation, Schools, Shopping Nearby
Roof	Asphalt Shingles

Construction	Wood, Vinyl
Foundation	Concrete Perimeter

**Additional Information**

Date Listed	April 30th, 2025
Days on Market	3
Zoning	Zone 21

DATA IS DEEMED RELIABLE BUT IS NOT GUARANTEED ACCURATE BY THE REALTORS® ASSOCIATION OF EDMONTON. COPYRIGHT 2025 BY THE REALTORS® ASSOCIATION OF EDMONTON. ALL RIGHTS RESERVED.Trademarks are owned or controlled by the Canadian Real Estate Association (CREA) and identify real estate professionals who are members of CREA (REALTOR®, REALTORS®) and/or the quality of services they provide (MLS®, Multiple Listing Service®)

Listing information last updated on May 3rd, 2025 at 7:02am MDT