

## \$395,000 - 14315 80 Street, Edmonton

MLS® #E4433114

**\$395,000**

4 Bedroom, 2.00 Bathroom, 1,067 sqft

Single Family on 0.00 Acres

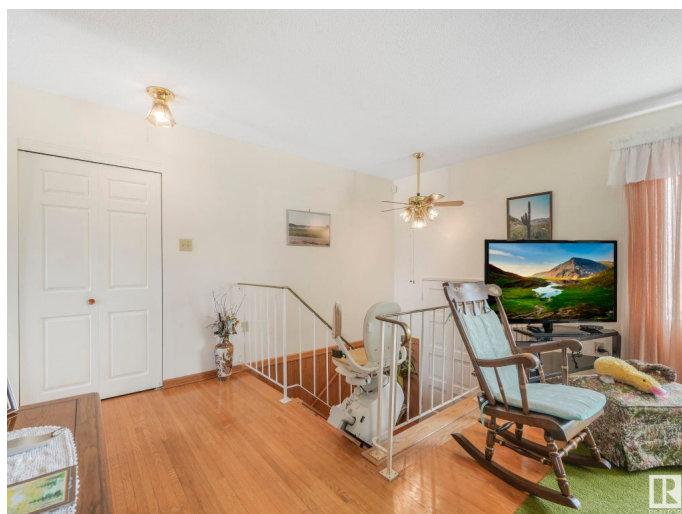
Kildare, Edmonton, AB

Wonderfully maintained original owner bi-level in Kildare. Built in 1968 this home features a bright and welcoming main floor with large west facing living room, large eat-in kitchen with plenty of storage and cooking spaces, formal dining room, a large primary bedroom, four piece main bathroom, and two additional main floor bedrooms. The fully finished basement has both front and back staircases, a massive fourth bedroom, three piece bathroom, large family room, and a craft or hobby work area. The east facing backyard has a large deck, is nicely landscaped with flower beds, and has a large double detached garage and also an oversized driveway that can park three cars.

Built in 1968

### Essential Information

MLS® #	E4433114
Price	\$395,000
Bedrooms	4
Bathrooms	2.00
Full Baths	2
Square Footage	1,067
Acres	0.00
Year Built	1968
Type	Single Family



Sub-Type	Detached Single Family
Style	Bi-Level
Status	Active

### Community Information

Address	14315 80 Street
Area	Edmonton
Subdivision	Kildare
City	Edmonton
County	ALBERTA
Province	AB
Postal Code	T5C 1L7

### Amenities

Amenities	Deck, Detectors Smoke, See Remarks
Parking	Double Garage Detached

### Interior

Appliances	Dryer, Fan-Ceiling, Garage Control, Garage Opener, Hood Fan, Oven-Built-In, Refrigerator, Storage Shed, Stove-Countertop Electric, Washer, Window Coverings
Heating	Forced Air-1, Natural Gas
Fireplace	Yes
Fireplaces	Freestanding
Stories	2
Has Basement	Yes
Basement	Full, Finished

### Exterior

Exterior	Wood, Vinyl
Exterior Features	Fenced, Landscaped, Public Transportation, Schools, Shopping Nearby, See Remarks
Roof	Asphalt Shingles
Construction	Wood, Vinyl
Foundation	Concrete Perimeter

### Additional Information

Date Listed	April 25th, 2025
Days on Market	12
Zoning	Zone 02

DATA IS DEEMED RELIABLE BUT IS NOT GUARANTEED ACCURATE BY THE REALTORS® ASSOCIATION OF EDMONTON. COPYRIGHT 2025 BY THE REALTORS® ASSOCIATION OF EDMONTON. ALL RIGHTS RESERVED.Trademarks are owned or controlled by the Canadian Real Estate Association (CREA) and identify real estate professionals who are members of CREA (REALTOR®, REALTORS®) and/or the quality of services they provide (MLS®, Multiple Listing Service®)

Listing information last updated on May 7th, 2025 at 12:47am MDT