

\$499,900 - 18 Spring Grove Crescent, Spruce Grove

MLS® #E4433046

\$499,900

4 Bedroom, 3.50 Bathroom, 1,785 sqft

Single Family on 0.00 Acres

Spruce Ridge, Spruce Grove, AB

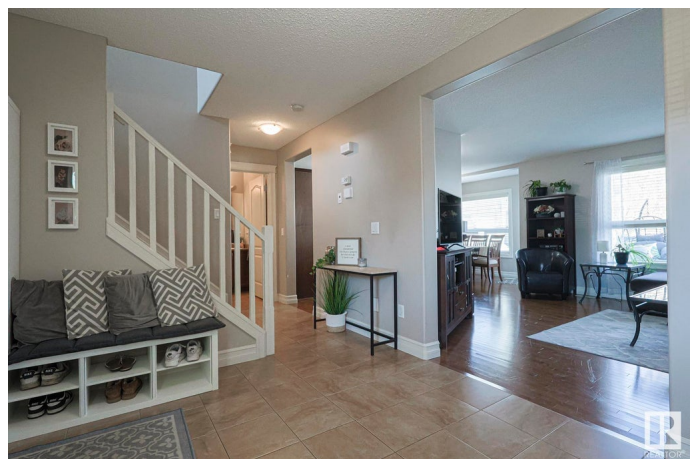
A Beautiful fully finished family home with a HUGE pride of ownership! House is in GREAT CONDITION! Over 1785 sq ft 2 storey, Hardwood floors, beautiful tile, 4 beds 3.5 baths. Nice 2 tiered deck in the back w a privacy screen and mature poplars for privacy! Great sized yard. Kitchen is LOVELY! Maple Shaker cabinets, beautiful style, BIG, SS appliances, LOTS of counter space and Cupboards! Opens to the living room, really cool layout. Really big front landing for guests. Main floor Laundry and a half bath! Upstairs COMMANDING and COZY BONUS ROOM w a corner gas fireplace! Big Windows. 3 bedrooms, perfect 4 pc bathroom incl a large primary room w a 4 pc ensuite and walk in closet! Basement has updated vinyl plank floors, another family room with BRIGHT windows ;) and a big bathroom with a tiled walk-in shower! Fully Turn key home ready for the next owner! Close to walking trails, parks, Copperhaven k-9 and SPA Highschool. Walk to the Tri Leisure centre and restaurants! Excellent location!

Built in 2009

Essential Information

MLS® # E4433046

Price \$499,900



Bedrooms	4
Bathrooms	3.50
Full Baths	3
Half Baths	1
Square Footage	1,785
Acres	0.00
Year Built	2009
Type	Single Family
Sub-Type	Detached Single Family
Style	2 Storey
Status	Active

Community Information

Address	18 Spring Grove Crescent
Area	Spruce Grove
Subdivision	Spruce Ridge
City	Spruce Grove
County	ALBERTA
Province	AB
Postal Code	T7X 0E7

Amenities

Amenities	Closet Organizers, Deck, Detectors Smoke
Parking	Double Garage Attached

Interior

Interior Features	ensuite bathroom
Appliances	Dishwasher-Built-In, Dryer, Oven-Microwave, Refrigerator, Stove-Electric, Washer, Window Coverings
Heating	Forced Air-1, Natural Gas
Fireplace	Yes
Fireplaces	Corner
Stories	3
Has Basement	Yes
Basement	Full, Finished

Exterior

Exterior	Wood, Vinyl
Exterior Features	Fenced, Flat Site, Golf Nearby, Landscaped, Low Maintenance

	Landscape, Playground Nearby, Schools, Shopping Nearby, Treed Lot
Roof	Asphalt Shingles
Construction	Wood, Vinyl
Foundation	Concrete Perimeter

Additional Information

Date Listed	April 26th, 2025
Days on Market	8
Zoning	Zone 91

DATA IS DEEMED RELIABLE BUT IS NOT GUARANTEED ACCURATE BY THE REALTORS® ASSOCIATION OF EDMONTON. COPYRIGHT 2025 BY THE REALTORS® ASSOCIATION OF EDMONTON. ALL RIGHTS RESERVED. Trademarks are owned or controlled by the Canadian Real Estate Association (CREA) and identify real estate professionals who are members of CREA (REALTOR®, REALTORS®) and/or the quality of services they provide (MLS®, Multiple Listing Service®)

Listing information last updated on May 4th, 2025 at 11:47am MDT