

\$334,900 - 27 10235 111 Street, Edmonton

MLS® #E4433002

\$334,900

2 Bedroom, 2.00 Bathroom, 1,629 sqft

Condo / Townhouse on 0.00 Acres

Downtown (Edmonton), Edmonton, AB

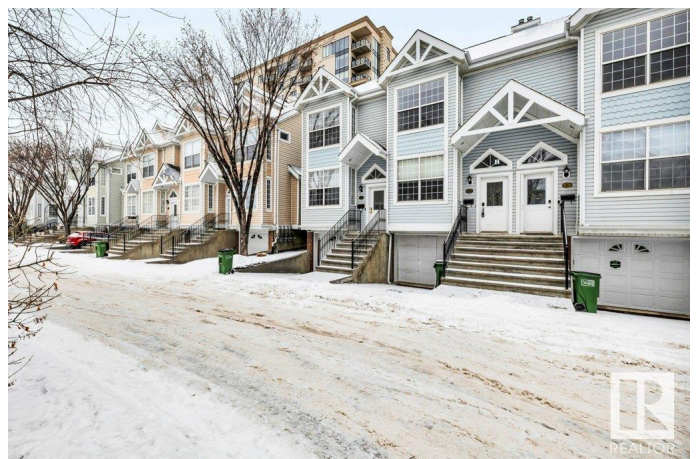
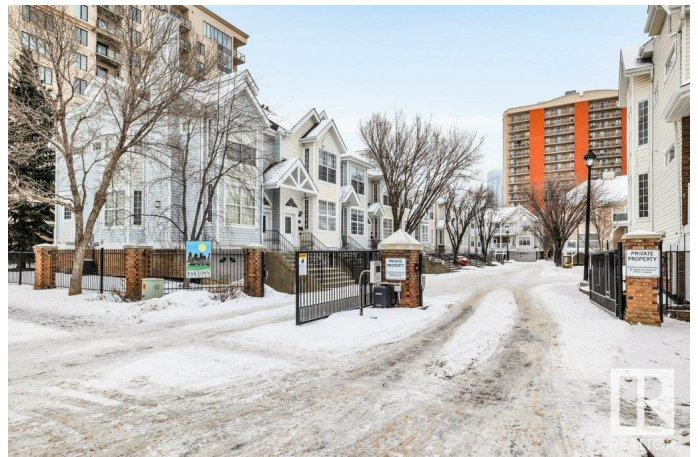
Welcome to Railtown Estates in the heart of downtown Edmonton! This stunning townhome offers over 1,628 sqft of modern living space combining comfort & convenience in an exclusive gated community. With breathtaking VIEWS OF THE CITY & SKYLINE, you can enjoy the vibrant downtown energy right from your windows or PRIVATE BALCONY! This spacious home features 2 large BEDROOMS, 2 full bathrooms on the main floor plus BEDROOM/DEN on the Upper floor. The home is beautifully designed with contemporary finishes, providing both functionality and style. The open-concept living area is perfect for entertaining, with a spacious kitchen, dining area, and living room that flow seamlessly together. For those who love outdoor space, the balcony offers a perfect retreat to relax and take in the views of downtown. The home is also just steps away from all amenities, including shopping, restaurants, and public transit. This gated community offers security and privacy & offers downtown living at its best!

Built in 2002

Essential Information

MLS® # E4433002

Price \$334,900



Bedrooms	2
Bathrooms	2.00
Full Baths	2
Square Footage	1,629
Acres	0.00
Year Built	2002
Type	Condo / Townhouse
Sub-Type	Townhouse
Style	2 Storey
Status	Active

Community Information

Address	27 10235 111 Street
Area	Edmonton
Subdivision	Downtown (Edmonton)
City	Edmonton
County	ALBERTA
Province	AB
Postal Code	T5K 2V5

Amenities

Amenities	Deck, Storage-In-Suite, Vaulted Ceiling
Parking Spaces	2
Parking	Single Garage Attached

Interior

Interior Features	ensuite bathroom
Appliances	Dishwasher-Built-In, Dryer, Garage Control, Hood Fan, Refrigerator, Stove-Electric, Washer
Heating	Forced Air-1, Natural Gas
Stories	2
Has Basement	Yes
Basement	None, No Basement

Exterior

Exterior	Wood, Vinyl
Exterior Features	Gated Community, Low Maintenance Landscape, Playground Nearby, Public Transportation, Schools, Shopping Nearby, View Downtown
Roof	Asphalt Shingles

Construction	Wood, Vinyl
Foundation	Concrete Perimeter

School Information

Elementary	John A. McDougall School
Middle	Westminster School
High	Victoria School

Additional Information

Date Listed	April 26th, 2025
Days on Market	7
Zoning	Zone 12
Condo Fee	\$584

DATA IS DEEMED RELIABLE BUT IS NOT GUARANTEED ACCURATE BY THE REALTORS® ASSOCIATION OF EDMONTON. COPYRIGHT 2025 BY THE REALTORS® ASSOCIATION OF EDMONTON. ALL RIGHTS RESERVED.Trademarks are owned or controlled by the Canadian Real Estate Association (CREA) and identify real estate professionals who are members of CREA (REALTOR®, REALTORS®) and/or the quality of services they provide (MLS®, Multiple Listing Service®)

Listing information last updated on May 3rd, 2025 at 7:32am MDT