

## **\$489,900 - 11804 158 Avenue, Edmonton**

MLS® #E4432684

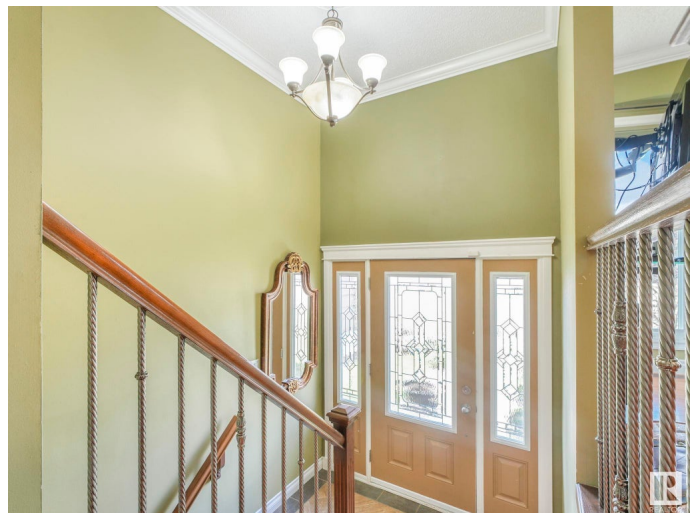
**\$489,900**

5 Bedroom, 2.50 Bathroom, 1,224 sqft  
Single Family on 0.00 Acres

Dunluce, Edmonton, AB

BACK IN THE MARKET! GORGEOUS, METICULOUSLY MAINTAINED & W/A FULLY FIN 2-BEDRM, BATH & KITCHEN BSMT? You read it right! Smart living meets family-friendly lifestyle in this FULLY RENOVATED BI-LEVEL tucked into a QUIET cul-de-sac. With a stylish main floor & SEPARATE ENTRNCE FOR THE BSMNT, itâ€™s ideal for multigenerational families. Upstairs features elegant updatesâ€™ HARDWOOD FLOORS, CROWN MOULDING, MEDALLIONS, WINDOWS, LIGHTS, IRON RAILINGS, FRESH PAINT & a show-stopping kitchen w/ STAINLESS STEEL APPLIANCES, QUARTZ COUNTERS & SLEEK CABINETRY. Two modern bathrms, refreshed bedrms, & QUALITY finishes throughout add comfort & value. Downstairs, FF W/ KITCHEN, PRIVATE LIVING SPACE W/ ITS OWN ENTRANCE, BIG WINDOWS, perfect for the extended family. Outside, enjoy a PROFESSIONALLY LANDSCAPED & WHITE-FENCED YARD, OVERSIZED DOUBLE GRAGE & TONS OF STREET PRKNG, NEWER SIDING, FENCE, SHINGLES (2022), ELECTRICAL, & the list goes on! Close to schools, shopping, YMCA, & transit â€™ offers both versatility & strong potential.

Built in 1976



## Essential Information

|                |                        |
|----------------|------------------------|
| MLS® #         | E4432684               |
| Price          | \$489,900              |
| Bedrooms       | 5                      |
| Bathrooms      | 2.50                   |
| Full Baths     | 2                      |
| Half Baths     | 1                      |
| Square Footage | 1,224                  |
| Acres          | 0.00                   |
| Year Built     | 1976                   |
| Type           | Single Family          |
| Sub-Type       | Detached Single Family |
| Style          | Bi-Level               |
| Status         | Active                 |

## Community Information

|             |                  |
|-------------|------------------|
| Address     | 11804 158 Avenue |
| Area        | Edmonton         |
| Subdivision | Dunluce          |
| City        | Edmonton         |
| County      | ALBERTA          |
| Province    | AB               |
| Postal Code | T5X 2K4          |

## Amenities

|                |   |
|----------------|---|
| Amenities      | Detectors Smoke, No Smoking Home, Parking-Extra, Parking-Visitor, See Remarks |
| Parking Spaces | 4   |
| Parking        | Double Garage Detached  |

## Interior

|                   |   |
|-------------------|---|
| Interior Features | ensuite bathroom  |
| Appliances        | Dishwasher-Built-In, Dryer, Hood Fan, Microwave Hood Fan, Washer, Refrigerators-Two, Stoves-Two |
| Heating           | Forced Air-1, Natural Gas   |
| Stories           | 2   |
| Has Suite         | Yes   |
| Has Basement      | Yes   |
| Basement          | Full, Finished  |

**Exterior**

|                   |   |
|-------------------|---|
| Exterior          | Wood, Stucco, Vinyl   |
| Exterior Features | Corner Lot, Cul-De-Sac, Fenced, Fruit Trees/Shrubs, Park/Reserve, Public Transportation, Schools, Shopping Nearby |
| Roof              | Asphalt Shingles  |
| Construction      | Wood, Stucco, Vinyl   |
| Foundation        | Concrete Perimeter  |

**School Information**

|            |                        |
|------------|------------------------|
| Elementary | Dunluce School         |
| Middle     | Rosslyn School         |
| High       | Queen Elizabeth School |

**Additional Information**

|                |                  |
|----------------|------------------|
| Date Listed    | April 25th, 2025 |
| Days on Market | 8                |
| Zoning         | Zone 27          |

DATA IS DEEMED RELIABLE BUT IS NOT GUARANTEED ACCURATE BY THE REALTORS® ASSOCIATION OF EDMONTON. COPYRIGHT 2025 BY THE REALTORS® ASSOCIATION OF EDMONTON. ALL RIGHTS RESERVED.Trademarks are owned or controlled by the Canadian Real Estate Association (CREA) and identify real estate professionals who are members of CREA (REALTOR®, REALTORS®) and/or the quality of services they provide (MLS®, Multiple Listing Service®)

Listing information last updated on May 3rd, 2025 at 9:02pm MDT