

\$699,900 - 4707 Kinney Road, Edmonton

MLS® #E4431172

\$699,900

4 Bedroom, 3.00 Bathroom, 2,238 sqft

Single Family on 0.00 Acres

Keswick Area, Edmonton, AB

LOCATION! Welcome to Excel Homes NEW in sought after KESWICK - partial WALKOUT The Rosewood. With nearly 2300SF of living space BACKING ONTO the storm POND, upon entering your are greeted with 9 FT CEILING, LVP flooring, A main-floor bedroom and full bathroom. The main floor features an UPGRADED kitchen, complete with crown moulding, an extended island, QUARTZ COUNTERS 42" chimney hood fan with a tiled backsplash, SS appliances built-in microwave with trim kit & walk-through pantry. There's a spacious great room and dining nook. Step outside to the REAR DECK, with BEAUTIFUL POND VIEWS. Upstairs, the central bonus room acts as a natural divider, offering optimal privacy between the primary suite and the additional bedrooms. The upgraded ensuite features a soaker tub, a shower unit and a dual-sink vanity. Completing the 2nd floor are two additional BR, full bath, and laundry. EXTRA 2 FT WIDER GARAGE, GREEN BUILT w/HRV, Ecobee thermostat, & more. SEPARATE ENTRANCE for future 2 BEDROOM LEGAL SUITE rough in.

Built in 2025

Essential Information

MLS® # E4431172

Price \$699,900



Bedrooms 4
 Bathrooms 3.00
 Full Baths 3
 Square Footage 2,238
 Acres 0.00
 Year Built 2025
 Type Single Family
 Sub-Type Detached Single Family
 Style 2 Storey
 Status Active

Community Information

Address 4707 Kinney Road
 Area Edmonton
 Subdivision Keswick Area
 City Edmonton
 County ALBERTA
 Province AB
 Postal Code T6W 5P2

Amenities

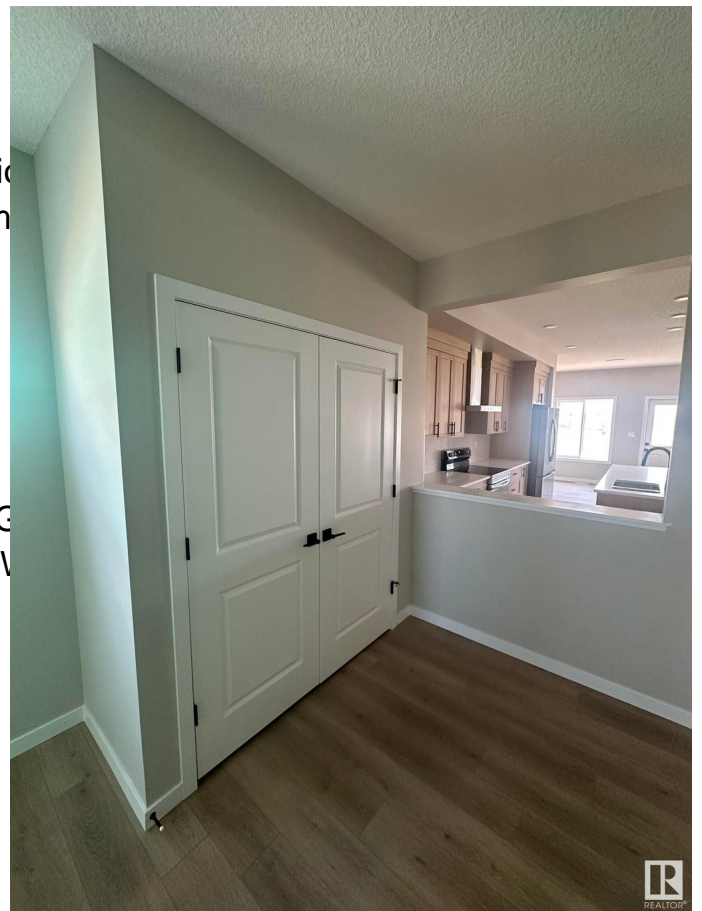
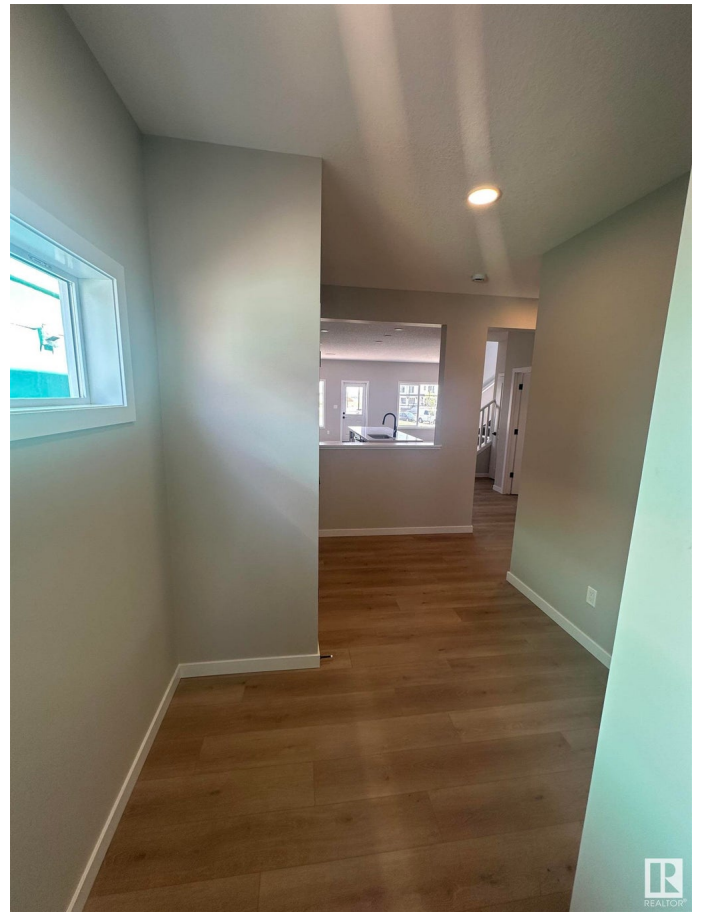
Amenities Ceiling 9 ft., Deck, Insulation, Green Building, HRV System
 Parking Double Garage Attached
 Is Waterfront Yes

Interior

Interior Features ensuite bathroom
 Appliances Dishwasher-Built-In, Dryer, Gas, Refrigerator, Stove-Electric, Washer
 Heating Forced Air-1, Natural Gas
 Stories 2
 Has Basement Yes
 Basement Full, Unfinished

Exterior

Exterior Wood, Stone, Vinyl
 Exterior Features Partially Landscaped, Playground Nearby, Public Transportation, Schools, Shopping Nearby, Stream/Pond



Roof	Asphalt Shingles
Construction	Wood, Stone, Vinyl
Foundation	Concrete Perimeter

Additional Information

Date Listed	April 16th, 2025
Days on Market	117
Zoning	Zone 56

DATA IS DEEMED RELIABLE BUT IS NOT GUARANTEED ACCURATE BY THE REALTORS® ASSOCIATION OF EDMONTON. COPYRIGHT 2025 BY THE REALTORS® ASSOCIATION OF EDMONTON. ALL RIGHTS RESERVED. Trademarks are owned or controlled by the Canadian Real Estate Association (CREA) and identify real estate professionals who are members of CREA (REALTOR®, REALTORS®) and/or the quality of services they provide (MLS®, Multiple Listing Service®)

Listing information last updated on August 11th, 2025 at 5:17am MDT