

Courtesy Of Christina A Reid Of Century 21 Leading

## \$605,500 - 2321 158a Street, Edmonton

MLS® #E4427730

### \$605,500

3 Bedroom, 2.50 Bathroom, 1,741 sqft  
Single Family on 0.00 Acres

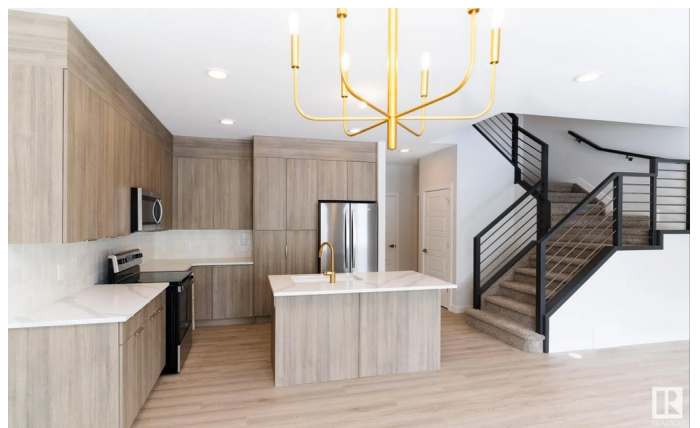
Glenridding Ravine, Edmonton, AB

Welcome to the Himalayan Fir™ a home that's perfect for families seeking a blend of comfort and style. With 3 spacious bedrooms and 2.5 modern bathrooms, there's plenty of room for everyone to relax and unwind. Step inside to discover an airy, open-concept layout that flows effortlessly from room to room, creating a welcoming atmosphere for both everyday living and entertaining. The kitchen, designed with family gatherings in mind, boasts ample counter space and a cozy dining area. Upstairs, you'll find the perfect retreat in the primary suite, complete with a luxurious ensuite and generous closet space. The additional bedrooms are ideal for kids, guests, or a home office. Side entry gives future basement suite potential.

Built in 2024

### Essential Information

MLS® #	E4427730
Price	\$605,500
Bedrooms	3
Bathrooms	2.50
Full Baths	2
Half Baths	1
Square Footage	1,741
Acres	0.00



Year Built	2024
Type	Single Family
Sub-Type	Detached Single Family
Style	2 Storey
Status	Active

### **Community Information**

Address	2321 158a Street
Area	Edmonton
Subdivision	Glenridding Ravine
City	Edmonton
County	ALBERTA
Province	AB
Postal Code	T6W 4L1

### **Amenities**

Amenities	Carbon Monoxide Detectors, Detectors Smoke, Hot Water Tankless, Smart/Program. Thermostat, HRV System
Parking	Double Garage Attached

### **Interior**

Interior Features	ensuite bathroom
Appliances	Dishwasher-Built-In, Dryer, Garage Control, Garage Opener, Microwave Hood Fan, Refrigerator, Stove-Electric, Washer
Heating	Forced Air-1, Natural Gas
Fireplace	Yes
Fireplaces	Insert
Stories	2
Has Basement	Yes
Basement	Full, Unfinished

### **Exterior**

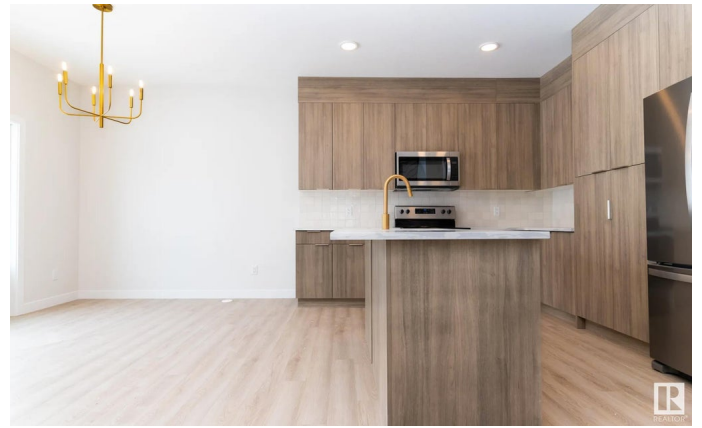
Exterior	Prefab, Vinyl
Exterior Features	Airport Nearby, Golf Nearby, Playground Nearby, Public Transportation, Schools, Shopping Nearby
Roof	Asphalt Shingles
Construction	Prefab, Vinyl
Foundation	Concrete Perimeter

### **School Information**

Elementary           GEORGE H. LUCK  
Middle                RIVERBEND  
High                  STRATHCONA

**Additional Information**

Date Listed           March 27th, 2025  
Days on Market      90  
Zoning                Zone 56



DATA IS DEEMED RELIABLE BUT IS NOT GUARANTEED ACCURATE BY THE REALTORS® ASSOCIATION OF EDMONTON. COPYRIGHT 2025 BY THE REALTORS® ASSOCIATION OF EDMONTON. ALL RIGHTS RESERVED. Trademarks are owned or controlled by the Canadian Real Estate Association (CREA) and identify real estate professionals who are members of CREA (REALTOR®, REALTORS®) and/or the quality of services they provide (MLS®, Multiple Listing Service®)

Listing information last updated on June 25th, 2025 at 8:18am MDT