

\$699,000 - 11332 57 Avenue, Edmonton

MLS® #E4427668

\$699,000

3 Bedroom, 2.50 Bathroom, 1,613 sqft

Single Family on 0.00 Acres

Lendrum Place, Edmonton, AB

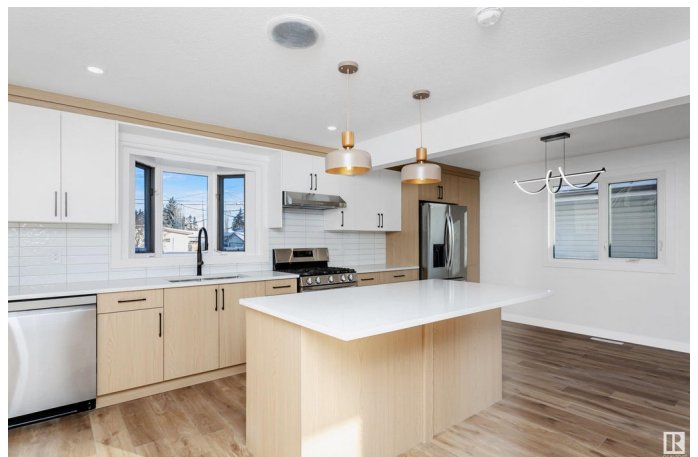
Stunning & FULLY renovated 1613 sq. ft. home in the highly sought-after neighbourhood of Lendrum Place! Nestled across from a park & just moments away from top amenities like the U of A, downtown and Southgate. This modern masterpiece combines style and functionality ideal for families. Open concept layout featuring a spacious living room with vinyl plank flooring, bright, all-new chef's dream kitchen with high-end s/s appliances & quartz countertops with a massive island. Family room with a cozy natural gas fireplace & backyard access, perfect for summer BBQs. Upstairs, discover 3 spacious bedrooms, including a primary bedroom with an ensuite, plus an additional 5-piece bath. The fully finished basement is a showstopper & offers a rec room, wet bar, and 4-piece bathroom making it ideal for entertaining. With double attached garage, RV parking, and proximity to a French immersion school, this better than new home truly has it all! Perfect home in a perfect neighbourhood! Some pictures virtually staged.

Built in 1966

Essential Information

MLS® # E4427668

Price \$699,000



Bedrooms	3
Bathrooms	2.50
Full Baths	2
Half Baths	1
Square Footage	1,613
Acres	0.00
Year Built	1966
Type	Single Family
Sub-Type	Detached Single Family
Style	4 Level Split
Status	Active

Community Information

Address	11332 57 Avenue
Area	Edmonton
Subdivision	Lendrum Place
City	Edmonton
County	ALBERTA
Province	AB
Postal Code	T6H 1B1

Amenities

Amenities	Parking-Extra, Patio, Smart/Program. Thermostat, R.V. Storage, Wet Bar
Parking Spaces	5
Parking	Double Garage Attached

Interior

Interior Features	ensuite bathroom
Appliances	Dishwasher-Built-In, Dryer, Garage Opener, Hood Fan, Oven-Microwave, Storage Shed, Stove-Gas, Washer
Heating	Forced Air-2, Natural Gas
Fireplace	Yes
Fireplaces	Brick Facing
Stories	4
Has Basement	Yes
Basement	Full, Finished

Exterior

Exterior	Wood, Brick, Metal, Stucco
Exterior Features	Back Lane, Fenced, Fruit Trees/Shrubs, Golf Nearby, Landscaped, Playground Nearby, Public Transportation, Schools, Shopping Nearby, Ski Hill Nearby
Roof	Asphalt Shingles
Construction	Wood, Brick, Metal, Stucco
Foundation	Concrete Perimeter

Additional Information

Date Listed	March 27th, 2025
Days on Market	36
Zoning	Zone 15

DATA IS DEEMED RELIABLE BUT IS NOT GUARANTEED ACCURATE BY THE REALTORS® ASSOCIATION OF EDMONTON. COPYRIGHT 2025 BY THE REALTORS® ASSOCIATION OF EDMONTON. ALL RIGHTS RESERVED.Trademarks are owned or controlled by the Canadian Real Estate Association (CREA) and identify real estate professionals who are members of CREA (REALTOR®, REALTORS®) and/or the quality of services they provide (MLS®, Multiple Listing Service®)

Listing information last updated on May 2nd, 2025 at 7:02am MDT